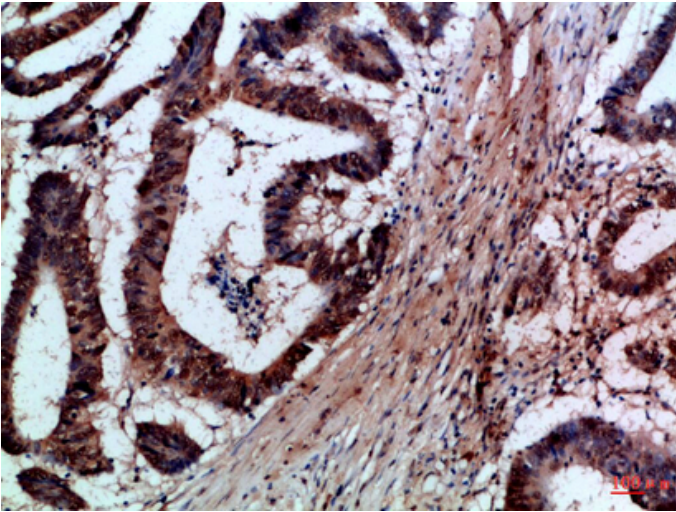


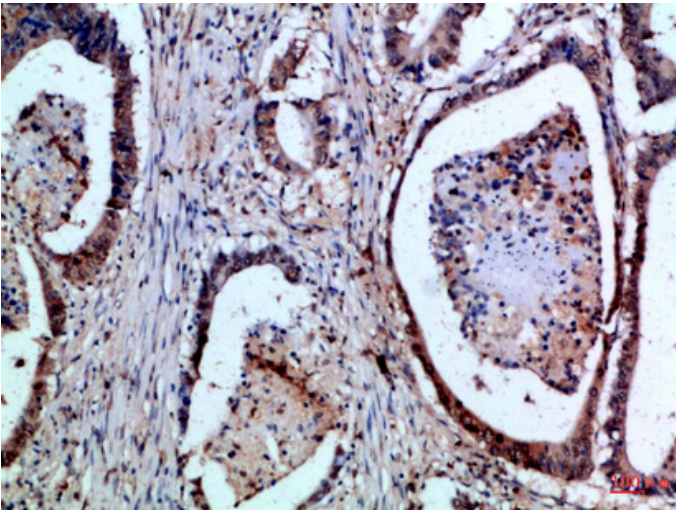
## FAS-L Polyclonal Antibody

Catalog_no :	AT6037
Applications :	IHC-p,ELISA
Reactivity :	Human
Category :	抗原抗体
Size :	100µg/50µg/20µg
Gene_name :	FASLG APT1LG1 CD95L FASL TNFSF6
Protein_name :	Tumor necrosis factor ligand superfamily member 6 (Apoptosis antigen ligand) (APTL) (CD95 ligand) (CD95-L) (Fas antigen ligand) (Fas ligand) (FasL) (CD antigen CD178) [Cleaved into: Tumor necrosis factor ligand superfamily member 6, membrane form; Tu
Humangene_id :	<a href="#">356</a>
Humanswissprot_no :	<a href="#">P48023</a>
Immunogen :	Synthetic peptide from human protein at AA range: 121-170
Specificity :	The antibody detects endogenous FAS-L
Formulation :	Liquid in PBS containing 50% glycerol, 0.5% BSA and 0.02% sodium azide.
Source :	Rabbit
Dilution :	IHC-p 1:50-200, ELISA 1:10000-20000
Purification :	The antibody was affinity-purified from rabbit antiserum by affinity-chromatography using epitope-specific immunogen.
Concentration :	1 mg/ml
Storage_stability :	-20°C/1 year
Msds :	MSDS_Antibody.pdf
Other_name :	Tumor necrosis factor ligand superfamily member 6 (Apoptosis antigen ligand) (APTL) (CD95 ligand) (CD95-L) (Fas antigen ligand) (Fas ligand) (FasL) (CD antigen CD178) [Cleaved into: Tumor necrosis factor ligand superfamily member 6, membrane form; Tumor necrosis factor ligand superfamily member 6, soluble form (Receptor-binding FasL ectodomain) (Soluble Fas ligand) (sFasL); ADAM10-processed FasL form (APL); FasL intracellular domain (FasL ICD) (SPPL2A-processed FasL form) (SPA)]

## Product Images



Immunohistochemical analysis of paraffin-embedded Human-colon-cancer, antibody was diluted at 1:100



Immunohistochemical analysis of paraffin-embedded Human-colon-cancer, antibody was diluted at 1:100