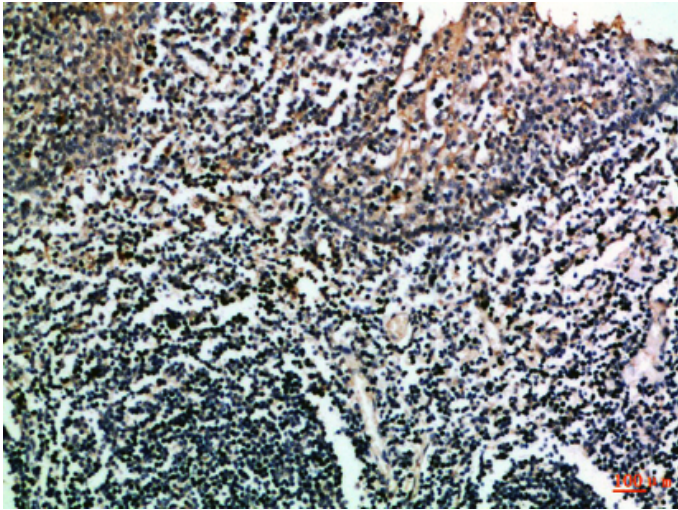




CD275 Polyclonal Antibody

| | |
|---------------------|---|
| Catalog_no : | AT6038 |
| Applications : | IHC-p,ELISA |
| Reactivity : | Human |
| Category : | 抗原抗体 |
| Size : | 100µg/50µg/20µg |
| Gene_name : | ICOSLG B7H2 B7RP1 ICOSL KIAA0653 |
| Protein_name : | ICOS ligand (B7 homolog 2) (B7-H2) (B7-like protein GI50) (B7-related protein 1) (B7RP-1) (CD antigen CD275) |
| Humangene_id : | 23308 |
| Humanswissprot_no : | O75144 |
| Immunogen : | Synthetic peptide from human protein at AA range: 201-250 |
| Specificity : | The antibody detects endogenous CD275 |
| Formulation : | Liquid in PBS containing 50% glycerol, 0.5% BSA and 0.02% sodium azide. |
| Source : | Rabbit |
| Dilution : | IHC-p 1:50-200, ELISA 1:10000-20000 |
| Purification : | The antibody was affinity-purified from rabbit antiserum by affinity-chromatography using epitope-specific immunogen. |
| Concentration : | 1 mg/ml |
| Storage_stability : | -20°C/1 year |
| Msds : | MSDS_Antibody.pdf |
| Other_name : | ICOS ligand (B7 homolog 2) (B7-H2) (B7-like protein GI50) (B7-related protein 1) (B7RP-1) (CD antigen CD275) |

Product Images



Immunohistochemical analysis of paraffin-embedded Human-tonsil, antibody was diluted at 1:100