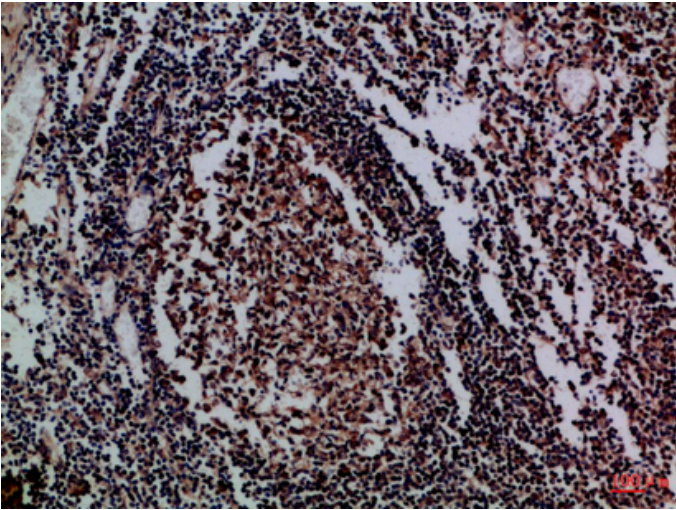


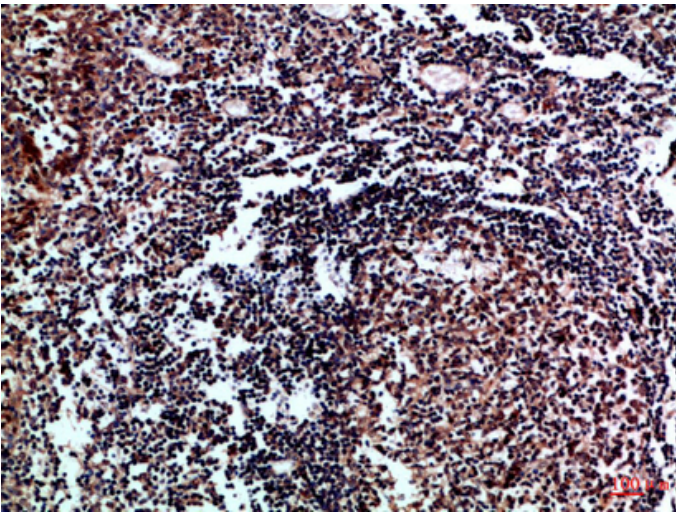
## IL-17D Polyclonal Antibody

Catalog_no :	AT6048
Applications :	IHC-p,ELISA
Reactivity :	Human
Category :	抗原抗体
Size :	100µg/50µg/20µg
Gene_name :	IL17D IL27 UNQ3096/PRO21175
Protein_name :	Interleukin-17D (IL-17D) (Interleukin-27) (IL-27)
Humangene_id :	<a href="#">53342</a>
Humanswissprot_no :	<a href="#">Q8TAD2</a>
Immunogen :	Synthetic peptide from human protein at AA range: 141-190
Specificity :	The antibody detects endogenous IL-17D
Formulation :	Liquid in PBS containing 50% glycerol, 0.5% BSA and 0.02% sodium azide.
Source :	Rabbit
Dilution :	IHC-p 1:50-200, ELISA 1:10000-20000
Purification :	The antibody was affinity-purified from rabbit antiserum by affinity-chromatography using epitope-specific immunogen.
Concentration :	1 mg/ml
Storage_stability :	-20°C/1 year
Msds :	<a href="#">MSDS_Antibody.pdf</a>
Other_name :	Interleukin-17D (IL-17D) (Interleukin-27) (IL-27)

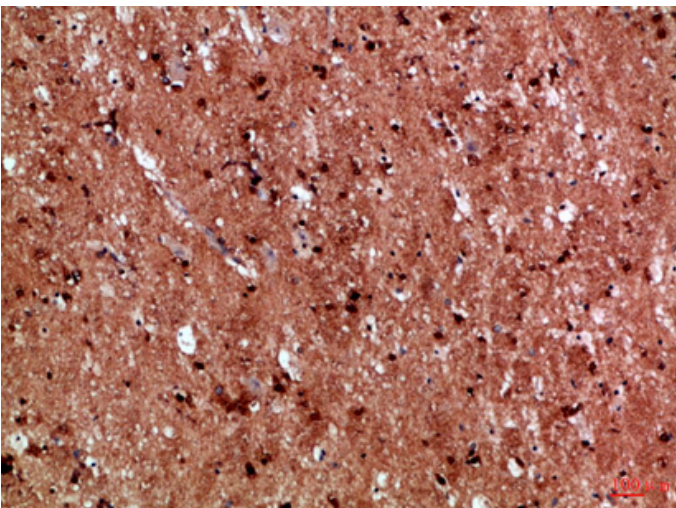
## Product Images



Immunohistochemical analysis of paraffin-embedded Human-tonsil, antibody was diluted at 1:100



Immunohistochemical analysis of paraffin-embedded Human-tonsil, antibody was diluted at 1:100



Immunohistochemical analysis of paraffin-embedded Human-brain, antibody was diluted at 1:100