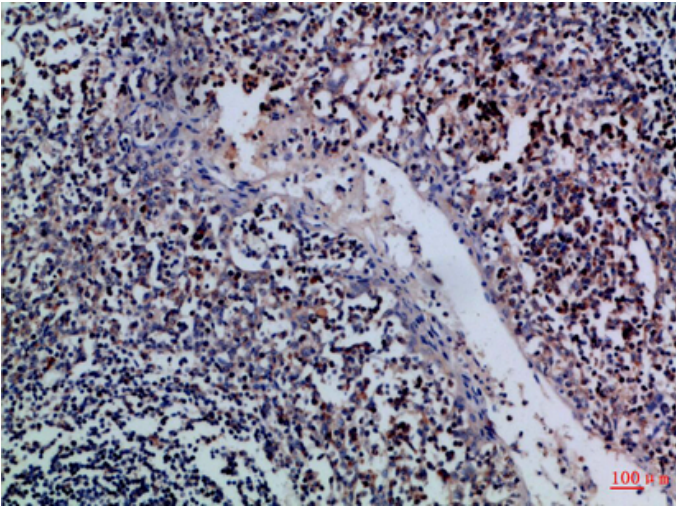


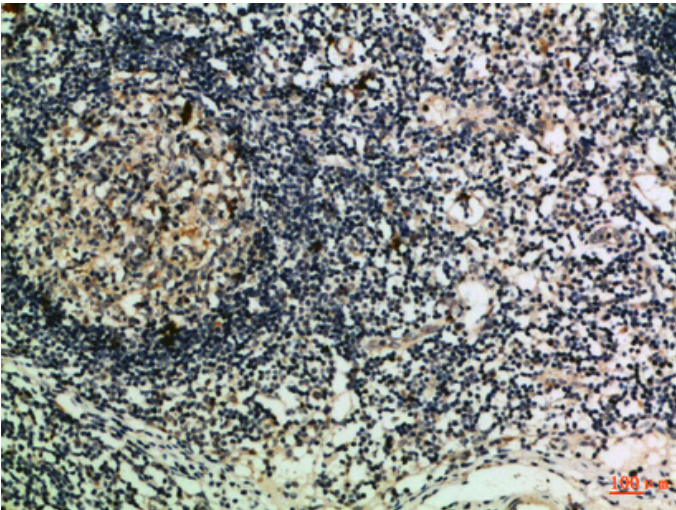
Granzyme M Polyclonal Antibody

Catalog_no :	AT6049
Applications :	IHC-p,ELISA
Reactivity :	Human
Category :	抗原抗体
Size :	100µg/50µg/20µg
Gene_name :	GZMM MET1
Protein_name :	Granzyme M (EC 3.4.21.-) (Met-1 serine protease) (Hu-Met-1) (Met-ase) (Natural killer cell granular protease)
Humangene_id :	3004
Humanswissprot_no :	P51124
Immunogen :	Synthetic peptide from human protein at AA range: 207-256
Specificity :	The antibody detects endogenous Granzyme M
Formulation :	Liquid in PBS containing 50% glycerol, 0.5% BSA and 0.02% sodium azide.
Source :	Rabbit
Dilution :	IHC-p 1:50-200, ELISA 1:10000-20000
Purification :	The antibody was affinity-purified from rabbit antiserum by affinity-chromatography using epitope-specific immunogen.
Concentration :	1 mg/ml
Storage_stability :	-20°C/1 year
Msds :	MSDS_Antibody.pdf
Other_name :	Granzyme M (EC 3.4.21.-) (Met-1 serine protease) (Hu-Met-1) (Met-ase) (Natural killer cell granular protease)

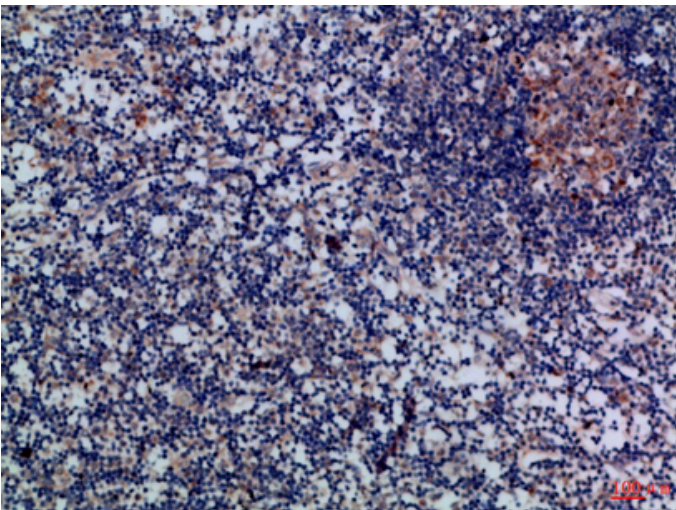
Product Images



Immunohistochemical analysis of paraffin-embedded Human-tonsil, antibody was diluted at 1:100



Immunohistochemical analysis of paraffin-embedded Human-lymph, antibody was diluted at 1:100



Immunohistochemical analysis of paraffin-embedded Human-lymph, antibody was diluted at 1:100