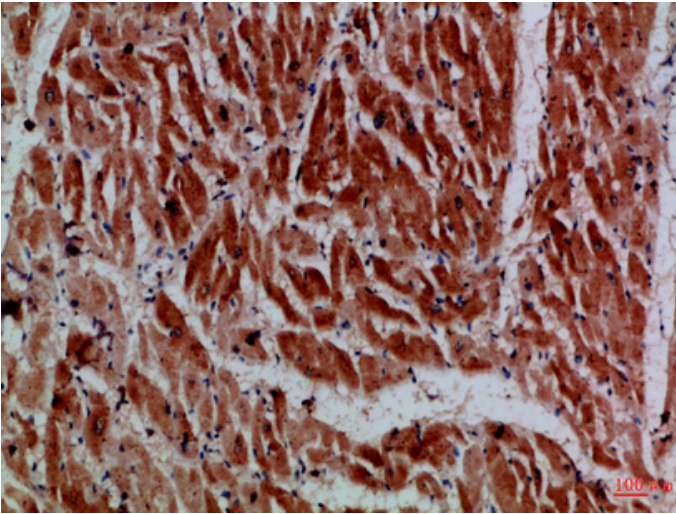




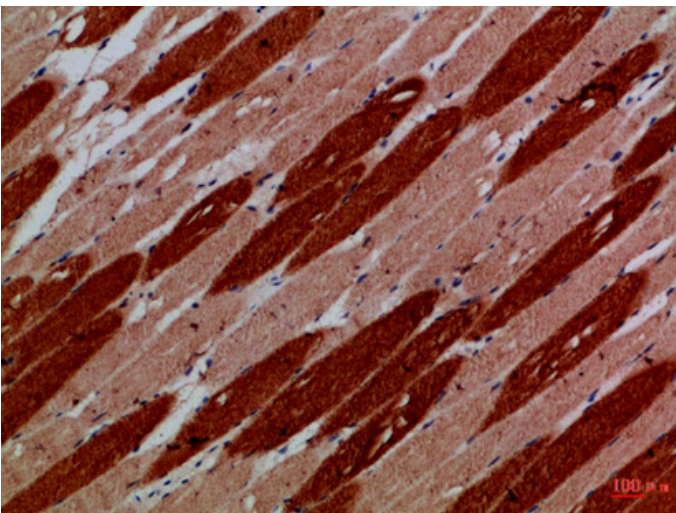
MYH6/MYH7 Polyclonal Antibody

Catalog_no :	AT6053
Applications :	IHC-p,ELISA
Reactivity :	Human,Mouse,Rat
Category :	抗原抗体
Size :	100µg/50µg/20µg
Gene_name :	MYH6/7 MYHCA/B
Protein_name :	Myosin-6 (Myosin heavy chain 6) (Myosin heavy chain, cardiac muscle alpha isoform) (MyHC-alpha) Myosin-7B (Antigen MLAA-21) (Myosin cardiac muscle beta chain) (Myosin heavy chain 7B, cardiac muscle beta isoform)
Humangene_id :	4624/57644
Humanswissprot_no :	P13533/P12883
Immunogen :	Synthetic peptide from human protein at AA range: 1871-1920
Specificity :	The antibody detects endogenous MYH6/MYH7
Formulation :	Liquid in PBS containing 50% glycerol, 0.5% BSA and 0.02% sodium azide.
Source :	Rabbit
Dilution :	IHC-p 1:50-200, ELISA 1:10000-20000
Purification :	The antibody was affinity-purified from rabbit antiserum by affinity-chromatography using epitope-specific immunogen.
Concentration :	1 mg/ml
Storage_stability :	-20°C/1 year
Msds :	MSDS_Antibody.pdf

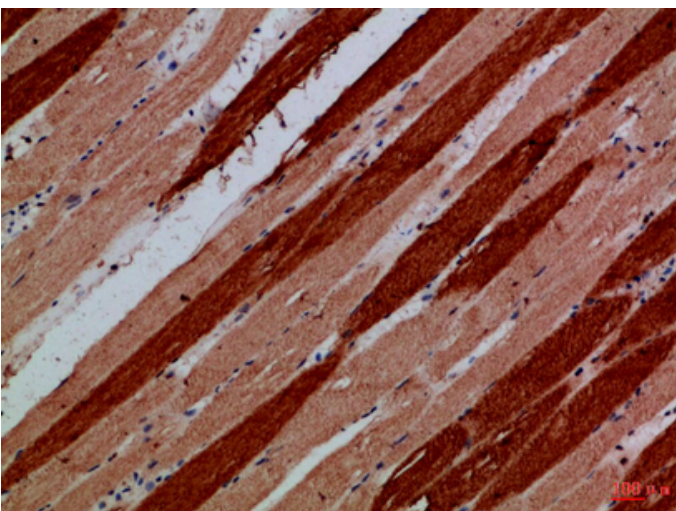
Product Images



Immunohistochemical analysis of paraffin-embedded Human-heart, antibody was diluted at 1:100



Immunohistochemical analysis of paraffin-embedded Human-skeletal-muscle, antibody was diluted at 1:100



Immunohistochemical analysis of paraffin-embedded Human-skeletal-muscle, antibody was diluted at 1:100