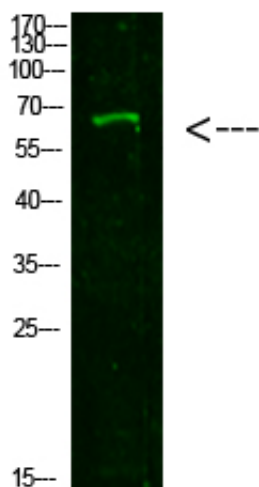




NUT Polyclonal Antibody

Catalog_no :	AT6064
Applications :	WB,ELISA
Reactivity :	Human
Category :	抗原抗体
Size :	100µg/50µg/20µg
Gene_name :	NUT C15orf55
Protein_name :	NUT
Humangene_id :	256646
Humanswissprot_no :	Q86Y26
Immunogen :	Synthesized peptide derived from human NUT. at AA range: 1082-1131
Specificity :	This antibody detects endogenous levels of NUT
Formulation :	Liquid in PBS containing 50% glycerol, 0.5% BSA and 0.02% sodium azide.
Source :	Rabbit
Dilution :	WB 1:500-2000, ELISA 1:10000-20000
Purification :	The antibody was affinity-purified from rabbit antiserum by affinity-chromatography using epitope-specific immunogen.
Concentration :	1 mg/ml
Storage_stability :	-20°C/1 year
Msds :	MSDS_Antibody.pdf
Other_name :	Protein NUT (Nuclear protein in testis)
Molecular Weight :	63KD

Product Images



Western Blot analysis of 293T cells using primary antibody diluted at 1:1000(4°C overnight). Secondary antibody : Goat Anti-rabbit IgG IRDye 800(diluted at 1:5000, 25°C, 1 hour)