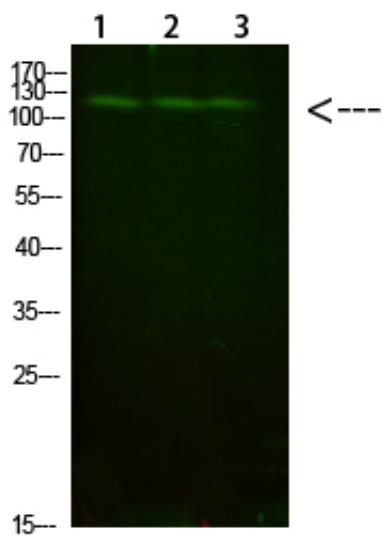




FIG4 Polyclonal Antibody

Catalog_no :	AT6068
Applications :	WB,ELISA
Reactivity :	Human,Mouse
Category :	抗原抗体
Size :	100µg/50µg/20µg
Gene_name :	FIG4 KIAA0274 SAC3
Protein_name :	FIG4
Humangene_id :	9896
Humanswissprot_no :	Q92562
Immunogen :	Synthesized peptide derived from human FIG4. at AA range: 341-390
Specificity :	This antibody detects endogenous levels of FIG4
Formulation :	Liquid in PBS containing 50% glycerol, 0.5% BSA and 0.02% sodium azide.
Source :	Rabbit
Dilution :	WB 1:500-2000, ELISA 1:10000-20000
Purification :	The antibody was affinity-purified from rabbit antiserum by affinity-chromatography using epitope-specific immunogen.
Concentration :	1 mg/ml
Storage_stability :	-20°C/1 year
Msds :	MSDS_Antibody.pdf
Other_name :	Polyphosphoinositide phosphatase (EC 3.1.3.-) (Phosphatidylinositol 3,5-bisphosphate 5-phosphatase) (SAC domain-containing protein 3)
Molecular Weight :	110KD

Product Images



Western Blot analysis of 1,mouse-liver 2,hela 3,mouse-brain cells using primary antibody diluted at 1:1000(4°C overnight). Secondary antibody : Goat Anti-rabbit IgG IRDye 800(diluted at 1:5000, 25°C, 1 hour)