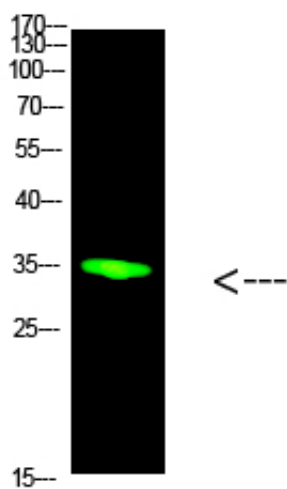




PCNA Polyclonal Antibody

Catalog_no :	AT6075
Applications :	WB,ELISA
Reactivity :	Human,Mouse,Rat
Category :	抗原抗体
Size :	100µg/50µg/20µg
Gene_name :	PCNA
Protein_name :	PCNA
Humangene_id :	5111
Humanswissprot_no :	P12004
Immunogen :	Synthesized peptide derived from human PCNA. at AA range: Internal
Specificity :	This antibody detects endogenous levels of PCNA
Formulation :	Liquid in PBS containing 50% glycerol, 0.5% BSA and 0.02% sodium azide.
Source :	Rabbit
Dilution :	WB 1:500-2000, ELISA 1:10000-20000
Purification :	The antibody was affinity-purified from rabbit antiserum by affinity-chromatography using epitope-specific immunogen.
Concentration :	1 mg/ml
Storage_stability :	-20°C/1 year
Msds :	MSDS_Antibody.pdf
Other_name :	Proliferating cell nuclear antigen (PCNA) (Cyclin)
Molecular Weight :	36KD

Product Images



Western Blot analysis of HeLa cells using primary antibody diluted at 1:1000(4°C overnight). Secondary antibody : Goat Anti-rabbit IgG IRDye 800(diluted at 1:5000, 25°C, 1 hour) cells nucleus extracted by Minute TM Cytoplasmic and Nuclear Fractionation kit (SC-003, Inventbiotech, MN, USA).