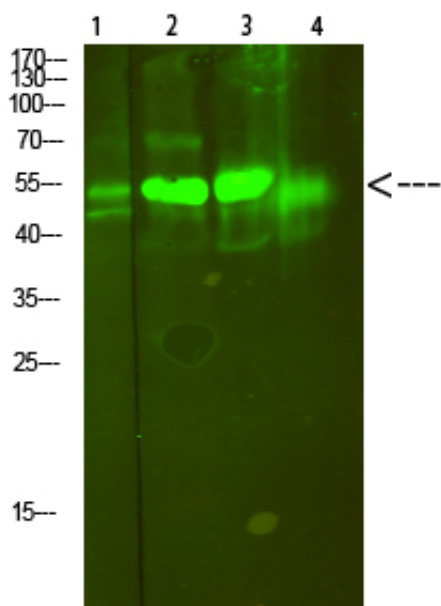


V-ATPase S1 Polyclonal Antibody

Catalog_no :	AT6079
Applications :	WB,ELISA
Reactivity :	Human,Mouse,Rat
Category :	抗原抗体
Size :	100µg/50µg/20µg
Gene_name :	ATP6AP1
Protein_name :	V-ATPase S1
Humangene_id :	537
Humanswissprot_no :	Q15904
Immunogen :	Synthesized peptide derived from human V-ATPase S1. at AA range: 421-470
Specificity :	V-ATPase S1 Polyclonal Antibody detects endogenous levels of V-ATPase S1
Formulation :	Liquid in PBS containing 50% glycerol, 0.5% BSA and 0.02% sodium azide.
Source :	Rabbit
Dilution :	WB 1:500-2000, ELISA 1:10000-20000
Purification :	The antibody was affinity-purified from rabbit antiserum by affinity-chromatography using epitope-specific immunogen.
Concentration :	1 mg/ml
Storage_stability :	-20°C/1 year
Msds :	MSDS_Antibody.pdf
Other_name :	V-type proton ATPase subunit S1 (V-ATPase subunit S1) (Protein XAP-3) (V-ATPase Ac45 subunit) (V-ATPase S1 accessory protein) (Vacuolar proton pump subunit S1)
Molecular Weight :	51KD

Product Images



Western Blot analysis of 1,mouse-lung 2,mouse-brain 3,mouse-spleen 4,mouse-kidney cells using primary antibody diluted at 1:500(4°C overnight). Secondary antibody : Goat Anti-rabbit IgG IRDye 800(diluted at 1:5000, 25°C, 1 hour)