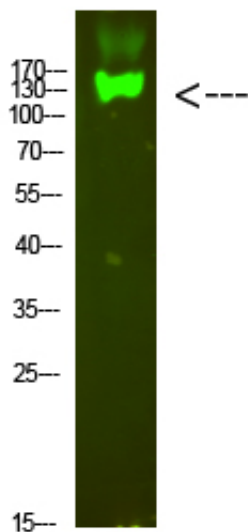




Integrin β 7 Polyclonal Antibody

Catalog_no :	AT6080
Applications :	WB,ELISA
Reactivity :	Human,Mouse
Category :	抗原抗体
Size :	100 μ g/50 μ g/20 μ g
Gene_name :	ITGB7
Protein_name :	Integrin β 7
Humangene_id :	3695
Humanswissprot_no :	P26010
Immunogen :	Synthesized peptide derived from human Integrin β 7. at AA range: 671-720
Specificity :	Integrin β 7 Polyclonal Antibody detects endogenous levels of Integrin β 7
Formulation :	Liquid in PBS containing 50% glycerol, 0.5% BSA and 0.02% sodium azide.
Source :	Rabbit
Dilution :	WB 1:500-2000, ELISA 1:10000-20000
Purification :	The antibody was affinity-purified from rabbit antiserum by affinity-chromatography using epitope-specific immunogen.
Concentration :	1 mg/ml
Storage_stability :	-20°C/1 year
Msds :	MSDS_Antibody.pdf
Other_name :	Integrin beta-7 (Gut homing receptor beta subunit)
Molecular Weight :	130KD

Product Images



Western Blot analysis of mouse-heart cells using primary antibody diluted at 1:1000(4°C overnight).
Secondary antibody : Goat Anti-rabbit IgG IRDye 800(diluted at 1:5000, 25°C, 1 hour)