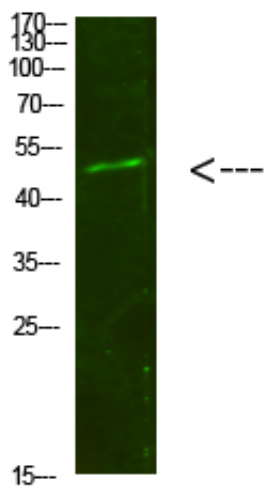


## Smad1/5/9 Polyclonal Antibody

|                     |  |
|---------------------|--|
| Catalog_no :        | AT6085   |
| Applications :      | WB,ELISA   |
| Reactivity :        | Human,Mouse,Rat  |
| Category :          | 抗原抗体   |
| Size :              | 100µg/50µg/20µg  |
| Gene_name :         | SMAD1/SMAD5/SMAD9  |
| Protein_name :      | Smad1/5/9  |
| Humanswissprot_no : | <a href="#">Q15797/Q99717/O15198</a>   |
| Immunogen :         | Synthesized peptide derived from human Smad1/5/9. at AA range: 291-340   |
| Specificity :       | Smad1/5/9 Polyclonal Antibody detects endogenous levels of Smad1/5/9   |
| Formulation :       | Liquid in PBS containing 50% glycerol, 0.5% BSA and 0.02% sodium azide.  |
| Source :            | Rabbit   |
| Dilution :          | WB 1:500-2000, ELISA 1:10000-20000   |
| Purification :      | The antibody was affinity-purified from rabbit antiserum by affinity-chromatography using epitope-specific immunogen.  |
| Concentration :     | 1 mg/ml  |
| Storage_stability : | -20°C/1 year   |
| Msds :              | MSDS_Antibody.pdf  |
| Other_name :        | Mothers against decapentaplegic homolog 1/5/9 (MAD homolog 1) (Mothers against DPP homolog 1) (JV4-1) (Mad-related protein 1) (SMAD family member 1) (SMAD 1/5/9) (Smad1) (hSMAD1) (Transforming growth factor-beta-signaling protein 1) (BSP-1) |
| Molecular Weight :  | 52KD   |

## Product Images



Western Blot analysis of 293T cells using primary antibody diluted at 1:500(4°C overnight). Secondary antibody : Goat Anti-rabbit IgG IRDye 800( diluted at 1:5000, 25°C, 1 hour)