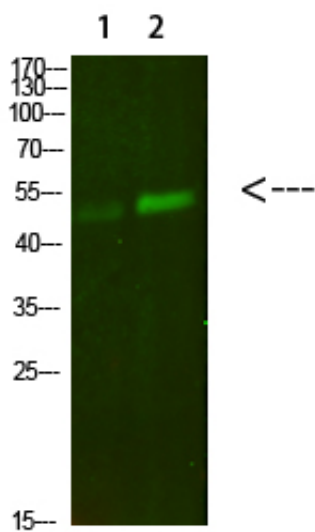




PBEF Polyclonal Antibody

| | |
|---------------------|---|
| Catalog_no : | <u>AT6086</u> |
| Applications : | <u>WB,ELISA</u> |
| Reactivity : | <u>Human,Mouse,Rat</u> |
| Category : | <u>抗原抗体</u> |
| Size : | <u>100µg/50µg/20µg</u> |
| Gene_name : | <u>NAMPT</u> |
| Protein_name : | <u>PBEF</u> |
| Humangene_id : | <u>10135</u> |
| Humanswissprot_no : | <u>P43490</u> |
| Immunogen : | <u>Synthesized peptide derived from human PBEF. at AA range: 411-460</u> |
| Specificity : | <u>PBEF Polyclonal Antibody detects endogenous levels of PBEF</u> |
| Formulation : | <u>Liquid in PBS containing 50% glycerol, 0.5% BSA and 0.02% sodium azide.</u> |
| Source : | <u>Rabbit</u> |
| Dilution : | <u>WB 1:500-2000, ELISA 1:10000-20000</u> |
| Purification : | <u>The antibody was affinity-purified from rabbit antiserum by affinity-chromatography using epitope-specific immunogen.</u> |
| Concentration : | <u>1 mg/ml</u> |
| Storage_stability : | <u>-20°C/1 year</u> |
| Msds : | <u>MSDS_Antibody.pdf</u> |
| Other_name : | <u>Nicotinamide phosphoribosyltransferase (NAmPRTase) (Nampt) (EC 2.4.2.12) (Pre-B-cell colony-enhancing factor 1) (Pre-B cell-enhancing factor) (Visfatin)</u> |
| Molecular Weight : | <u>54KD</u> |

Product Images



Western Blot analysis of 1,mouse-lung 2,mouse-kidney cells using primary antibody diluted at 1:500(4°C overnight). Secondary antibody : Goat Anti-rabbit IgG IRDye 800(diluted at 1:5000, 25°C, 1 hour)