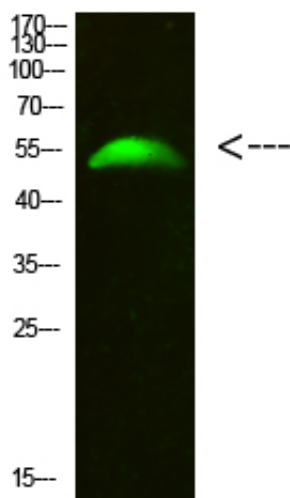




GCM2 Polyclonal Antibody

Catalog_no :	<u>AT6090</u>
Applications :	<u>WB,ELISA</u>
Reactivity :	<u>Human,Mouse,Rat</u>
Category :	<u>抗原抗体</u>
Size :	<u>100µg/50µg/20µg</u>
Gene_name :	<u>GCM2</u>
Protein_name :	<u>GCM2</u>
Humangene_id :	<u>9247</u>
Humanswissprot_no :	<u>O75603</u>
Immunogen :	<u>Synthesized peptide derived from human GCM2. at AA range: 21-70</u>
Specificity :	<u>GCM2 Polyclonal Antibody detects endogenous levels of GCM2</u>
Formulation :	<u>Liquid in PBS containing 50% glycerol, 0.5% BSA and 0.02% sodium azide.</u>
Source :	<u>Rabbit</u>
Dilution :	<u>WB 1:500-2000, ELISA 1:10000-20000</u>
Purification :	<u>The antibody was affinity-purified from rabbit antiserum by affinity-chromatography using epitope-specific immunogen.</u>
Concentration :	<u>1 mg/ml</u>
Storage_stability :	<u>-20°C/1 year</u>
Msds :	<u>MSDS_Antibody.pdf</u>
Other_name :	<u>Chorion-specific transcription factor GCMb (hGCMb) (GCM motif protein 2) (Glial cells missing homolog 2)</u>
Molecular Weight :	<u>56KD</u>

Product Images



Western Blot analysis of 293T cells using primary antibody diluted at 1:500(4°C overnight). Secondary antibody : Goat Anti-rabbit IgG IRDye 800(diluted at 1:5000, 25°C, 1 hour)