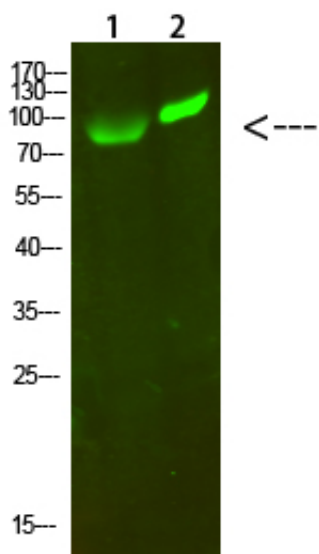


## GCK/GLK Polyclonal Antibody

Catalog_no :	AT6093
Applications :	WB,ELISA
Reactivity :	Human,Rat
Category :	抗原抗体
Size :	100µg/50µg/20µg
Gene_name :	MAP4K2/MAP4K3
Protein_name :	GCK/GLK
Humanswissprot_no :	<a href="#">Q12851/Q8IVH8</a>
Immunogen :	Synthesized peptide derived from human GCK/GLK. at AA range: 221-270
Specificity :	GCK/GLK Polyclonal Antibody detects endogenous levels of GCK/GLK
Formulation :	Liquid in PBS containing 50% glycerol, 0.5% BSA and 0.02% sodium azide.
Source :	Rabbit
Dilution :	WB 1:500-2000, ELISA 1:10000-20000
Purification :	The antibody was affinity-purified from rabbit antiserum by affinity-chromatography using epitope-specific immunogen.
Concentration :	1 mg/ml
Storage_stability :	-20°C/1 year
Msds :	MSDS_Antibody.pdf
Other_name :	Mitogen-activated protein kinase kinase kinase kinase 2 (EC 2.7.11.1) (B lymphocyte serine/threonine-protein kinase) (Germinal center kinase) (GC kinase) (MAPK/ERK kinase kinase kinase 2) (MEK kinase kinase 2) (MEKKK 2) (Rab8-interacting protein) Mitogen-activated protein kinase kinase kinase kinase 3 (EC 2.7.11.1) (Germinal center kinase-related protein kinase) (GLK) (MAPK/ERK kinase kinase kinase 3) (MEK kinase kinase 3) (MEKKK 3)
Molecular Weight :	100KD

## Product Images



Western Blot analysis of 1,293T 2, hela cells using primary antibody diluted at 1:1000(4°C overnight).  
Secondary antibody : Goat Anti-rabbit IgG IRDye 800( diluted at 1:5000, 25°C, 1 hour)