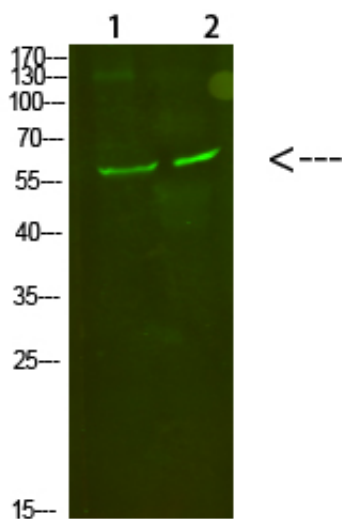


C8  $\alpha$  Polyclonal Antibody

Catalog_no :	AT6096
Applications :	WB,ELISA
Reactivity :	Human
Category :	抗原抗体
Size :	100 $\mu$ g/50 $\mu$ g/20 $\mu$ g
Gene_name :	C8A
Protein_name :	C8 $\alpha$
Humangene_id :	<a href="#">731</a>
Humanswissprot_no :	<a href="#">P07357</a>
Immunogen :	Synthesized peptide derived from human C8 $\alpha$ . at AA range: 201-250
Specificity :	C8 $\alpha$ Polyclonal Antibody detects endogenous levels of C8 $\alpha$
Formulation :	Liquid in PBS containing 50% glycerol, 0.5% BSA and 0.02% sodium azide.
Source :	Rabbit
Dilution :	WB 1:500-2000, ELISA 1:10000-20000
Purification :	The antibody was affinity-purified from rabbit antiserum by affinity-chromatography using epitope-specific immunogen.
Concentration :	1 mg/ml
Storage_stability :	-20°C/1 year
Msds :	<a href="#">MSDS_Antibody.pdf</a>
Other_name :	Complement component C8 alpha chain (Complement component 8 subunit alpha)
Molecular Weight :	60KD

## Product Images



Western Blot analysis of 1,mouse-kidney 2,mouse-heart cells using primary antibody diluted at 1:500(4°C overnight). Secondary antibody : Goat Anti-rabbit IgG IRDye 800( diluted at 1:5000, 25°C, 1 hour)