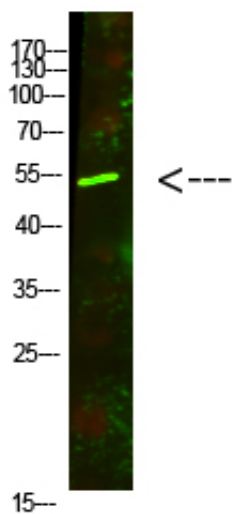




AVPR1A Polyclonal Antibody

Catalog_no :	AT6097
Applications :	WB,ELISA
Reactivity :	Human,Mouse
Category :	抗原抗体
Size :	100µg/50µg/20µg
Gene_name :	AVPR1A
Protein_name :	AVPR1A
Humangene_id :	552
Humanswissprot_no :	P37288
Immunogen :	Synthesized peptide derived from human AVPR1A. at AA range: 11-60
Specificity :	AVPR1A Polyclonal Antibody detects endogenous levels of AVPR1A
Formulation :	Liquid in PBS containing 50% glycerol, 0.5% BSA and 0.02% sodium azide.
Source :	Rabbit
Dilution :	WB 1:500-2000, ELISA 1:10000-20000
Purification :	The antibody was affinity-purified from rabbit antiserum by affinity-chromatography using epitope-specific immunogen.
Concentration :	1 mg/ml
Storage_stability :	-20°C/1 year
Msds :	MSDS_Antibody.pdf
Other_name :	Vasopressin V1a receptor (V1aR) (AVPR V1a) (Antidiuretic hormone receptor 1a) (Vascular/hepatic-type arginine vasopressin receptor)
Molecular Weight :	55KD

Product Images



Western Blot analysis of mouse-lung cells using primary antibody diluted at 1:500(4°C overnight). Secondary antibody : Goat Anti-rabbit IgG IRDye 800(diluted at 1:5000, 25°C, 1 hour)