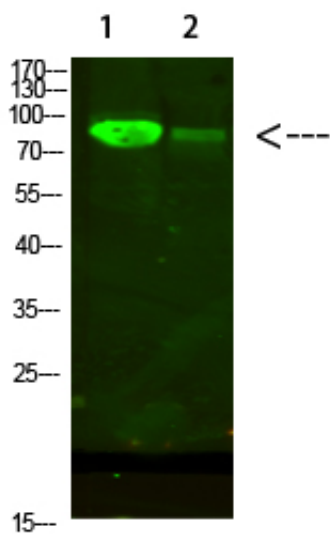


## AFG3L2 Polyclonal Antibody

Catalog_no :	AT6098
Applications :	WB,ELISA
Reactivity :	Human
Category :	抗原抗体
Size :	100µg/50µg/20µg
Gene_name :	AFG3L2
Protein_name :	AFG3L2
Humangene_id :	<a href="#">10939</a>
Humanswissprot_no :	<a href="#">Q9Y4W6</a>
Immunogen :	Synthesized peptide derived from human AFG3L2. at AA range: 744-793
Specificity :	AFG3L2 Polyclonal Antibody detects endogenous levels of AFG3L2
Formulation :	Liquid in PBS containing 50% glycerol, 0.5% BSA and 0.02% sodium azide.
Source :	Rabbit
Dilution :	WB 1:500-2000, ELISA 1:10000-20000
Purification :	The antibody was affinity-purified from rabbit antiserum by affinity-chromatography using epitope-specific immunogen.
Concentration :	1 mg/ml
Storage_stability :	-20°C/1 year
Msds :	MSDS_Antibody.pdf
Other_name :	AFG3-like protein 2 (EC 3.4.24.-) (Paraplegin-like protein)
Molecular Weight :	88KD

## Product Images



Western Blot analysis of 1,mouse-heart 2,293T cells using primary antibody diluted at 1:500(4°C overnight). Secondary antibody : Goat Anti-rabbit IgG IRDye 800( diluted at 1:5000, 25°C, 1 hour)