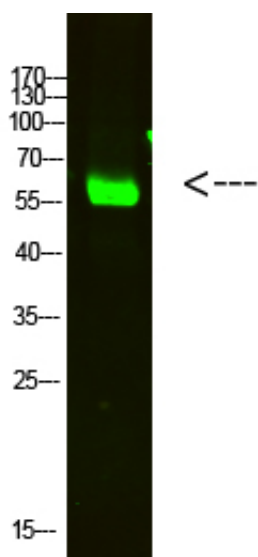




OASL Polyclonal Antibody

Catalog_no :	AT6102
Applications :	WB,ELISA
Reactivity :	Human
Category :	抗原抗体
Size :	100µg/50µg/20µg
Gene_name :	OASL
Protein_name :	OASL
Humangene_id :	8638
Humanswissprot_no :	Q15646
Immunogen :	Synthesized peptide derived from human OASL. at AA range: 1-50
Specificity :	OASL Polyclonal Antibody detects endogenous levels of OASL
Formulation :	Liquid in PBS containing 50% glycerol, 0.5% BSA and 0.02% sodium azide.
Source :	Rabbit
Dilution :	WB 1:500-2000, ELISA 1:10000-20000
Purification :	The antibody was affinity-purified from rabbit antiserum by affinity-chromatography using epitope-specific immunogen.
Concentration :	1 mg/ml
Storage_stability :	-20°C/1 year
Msds :	MSDS_Antibody.pdf
Other_name :	2'-5'-oligoadenylate synthase-like protein (2'-5'-OAS-related protein) (2'-5'-OAS-RP) (59 kDa 2'-5'-oligoadenylate synthase-like protein) (Thyroid receptor-interacting protein 14) (TR-interacting protein 14) (TRIP-14) (p59 OASL) (p59OASL)
Molecular Weight :	60KD

Product Images



Western Blot analysis of HELA cells using primary antibody diluted at 1:2000(4°C overnight). Secondary antibody : Goat Anti-rabbit IgG IRDye 800(diluted at 1:5000, 25°C, 1 hour)