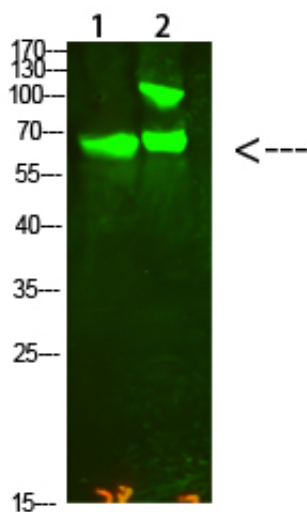




COL13A1 Polyclonal Antibody

Catalog_no :	AT6103
Applications :	WB,ELISA
Reactivity :	Human,Mouse
Category :	抗原抗体
Size :	100µg/50µg/20µg
Gene_name :	COL13A1
Protein_name :	COL13A1
Humangene_id :	1305
Humanswissprot_no :	Q5TAT6
Immunogen :	Synthesized peptide derived from human COL13A1. at AA range: 41-90
Specificity :	COL13A1 Polyclonal Antibody detects endogenous levels of COL13A1
Formulation :	Liquid in PBS containing 50% glycerol, 0.5% BSA and 0.02% sodium azide.
Source :	Rabbit
Dilution :	WB 1:500-2000, ELISA 1:10000-20000
Purification :	The antibody was affinity-purified from rabbit antiserum by affinity-chromatography using epitope-specific immunogen.
Concentration :	1 mg/ml
Storage_stability :	-20°C/1 year
Msds :	MSDS_Antibody.pdf
Other_name :	Collagen alpha-1(XIII) chain (COLXIII A1)
Molecular Weight :	70KD

Product Images



Western Blot analysis of 1,Hela 2,Mouse-kidney cells using primary antibody diluted at 1:2000(4°C overnight). Secondary antibody : Goat Anti-rabbit IgG IRDye 800(diluted at 1:5000, 25°C, 1 hour)