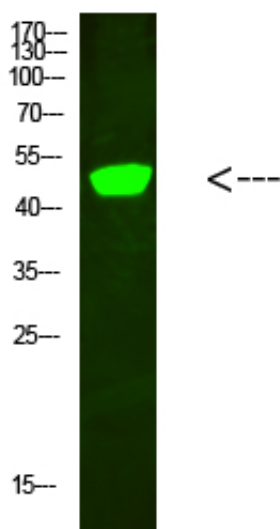


## C1RL Polyclonal Antibody

Catalog_no :	AT6105
Applications :	WB,ELISA
Reactivity :	Human
Category :	抗原抗体
Size :	100µg/50µg/20µg
Gene_name :	C1RL
Protein_name :	C1RL
Humangene_id :	<a href="#">51279</a>
Humanswissprot_no :	<a href="#">Q9NZP8</a>
Immunogen :	Synthesized peptide derived from human C1RL. at AA range: 371-420
Specificity :	C1RL Polyclonal Antibody detects endogenous levels of C1RL
Formulation :	Liquid in PBS containing 50% glycerol, 0.5% BSA and 0.02% sodium azide.
Source :	Rabbit
Dilution :	WB 1:500-2000, ELISA 1:10000-20000
Purification :	The antibody was affinity-purified from rabbit antiserum by affinity-chromatography using epitope-specific immunogen.
Concentration :	1 mg/ml
Storage_stability :	-20°C/1 year
Msds :	<a href="#">MSDS_Antibody.pdf</a>
Other_name :	Complement C1r subcomponent-like protein (C1r-LP) (C1r-like protein) (EC 3.4.21.-) (C1r-like serine protease analog protein) (CLSPa)
Molecular Weight :	53KD

## Product Images



Western Blot analysis of hela cells using primary antibody diluted at 1:500(4°C overnight). Secondary antibody : Goat Anti-rabbit IgG IRDye 800( diluted at 1:5000, 25°C, 1 hour)