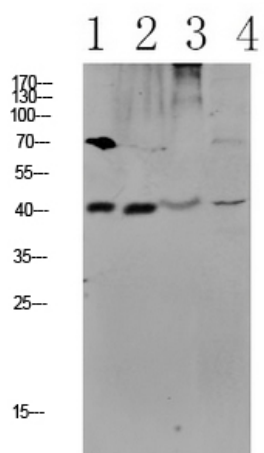


CCR5 Polyclonal Antibody

Catalog_no :	AT6108
Applications :	WB,ELISA
Reactivity :	Human,Mouse,Rat
Category :	抗原抗体
Size :	100µg/50µg/20µg
Gene_name :	CCR5 CMKBR5
Protein_name :	C-C chemokine receptor type 5 (C-C CKR-5) (CC-CKR-5) (CCR-5) (CCR5) (CHEMR13) (HIV-1 fusion coreceptor) (CD antigen CD195)
Humangene_id :	1234
Humanswissprot_no :	P51681
Immunogen :	Synthesized peptide derived from human CCR5 Polyclonal
Specificity :	This antibody detects endogenous levels of CCR5.
Formulation :	Liquid in PBS containing 50% glycerol, 0.5% BSA and 0.02% sodium azide.
Source :	Rabbit
Dilution :	WB 1:500-2000, ELISA 1:10000-20000
Purification :	The antibody was affinity-purified from rabbit antiserum by affinity-chromatography using epitope-specific immunogen.
Concentration :	1 mg/ml
Storage_stability :	-20°C/1 year
Msds :	MSDS_Antibody.pdf
Other_name :	C-C chemokine receptor type 5 (C-C CKR-5) (CC-CKR-5) (CCR-5) (CCR5) (CHEMR13) (HIV-1 fusion coreceptor) (CD antigen CD195)
Molecular Weight :	40KD

Product Images



- 1 customer's
- 2 HEPG2 UV
- 3 mouse-kidney
- 4 CAC02

Western blot analysis of various lysate, antibody was diluted at 1000. Secondary antibody was diluted at 1:20000