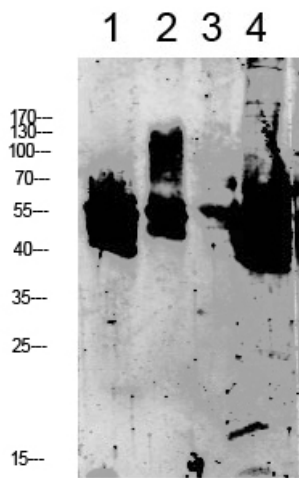




Keratin 8 Polyclonal Antibody

Catalog_no :	AT6114
Applications :	WB,ELISA
Reactivity :	Human,Mouse,Rat
Category :	抗原抗体
Size :	100µg/50µg/20µg
Gene_name :	KRT8 CYK8
Protein_name :	Keratin, type II cytoskeletal 8 (Cytokeratin-8) (CK-8) (Keratin-8) (K8) (Type-II keratin Kb8)
Humangene_id :	3856
Humanswissprot_no :	P05787
Immunogen :	Synthesized peptide derived from human Keratin 8 Polyclonal
Specificity :	This antibody detects endogenous levels of Keratin 8.
Formulation :	Liquid in PBS containing 50% glycerol, 0.5% BSA and 0.02% sodium azide.
Source :	Rabbit
Dilution :	WB 1:500-2000, ELISA 1:10000-20000
Purification :	The antibody was affinity-purified from rabbit antiserum by affinity-chromatography using epitope-specific immunogen.
Concentration :	1 mg/ml
Storage_stability :	-20°C/1 year
Msds :	MSDS_Antibody.pdf
Other_name :	Keratin, type II cytoskeletal 8 (Cytokeratin-8) (CK-8) (Keratin-8) (K8) (Type-II keratin Kb8)
Molecular Weight :	53KD

Product Images



Western blot analysis of various lysate, antibody was diluted at 1000. Secondary antibody was diluted at 1:20000

- 1 mouse-brain
- 2 mouse-liver
- 3 CACO2
- 4 3T3