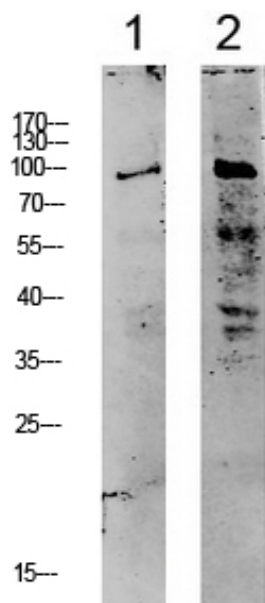




## Kv2.1/KCNB1 Polyclonal Antibody

Catalog_no :	<u>AT6116</u>
Applications :	<u>WB,ELISA</u>
Reactivity :	<u>Human,Mouse,Rat</u>
Category :	<u>抗原抗体</u>
Size :	<u>100µg/50µg/20µg</u>
Gene_name :	<u>KCNB1</u>
Protein_name :	<u>Potassium voltage-gated channel subfamily B member 1 (Delayed rectifier potassium channel 1) (DRK1) (h-DRK1) (Voltage-gated potassium channel subunit Kv2.1)</u>
Humangene_id :	<u><a href="#">3745</a></u>
Humanswissprot_no :	<u><a href="#">Q14721</a></u>
Immunogen :	<u>Synthesized peptide derived from human Kv2.1/KCNB1 Polyclonal</u>
Specificity :	<u>This antibody detects endogenous levels of Kv2.1/KCNB1.</u>
Formulation :	<u>Liquid in PBS containing 50% glycerol, 0.5% BSA and 0.02% sodium azide.</u>
Source :	<u>Rabbit</u>
Dilution :	<u>WB 1:500-2000, ELISA 1:10000-20000</u>
Purification :	<u>The antibody was affinity-purified from rabbit antiserum by affinity-chromatography using epitope-specific immunogen.</u>
Concentration :	<u>1 mg/ml</u>
Storage_stability :	<u>-20°C/1 year</u>
Msds :	<u>MSDS_Antibody.pdf</u>
Other_name :	<u>Potassium voltage-gated channel subfamily B member 1 (Delayed rectifier potassium channel 1) (DRK1) (h-DRK1) (Voltage-gated potassium channel subunit Kv2.1)</u>
Molecular Weight :	<u>95KD</u>

## Product Images



1 CACO2  
2 customer's

Western blot analysis of various lysate, antibody was diluted at 1000. Secondary antibody was diluted at 1:20000