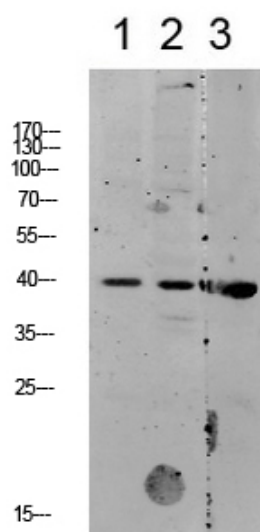




## p38 MAPK Polyclonal Antibody

Catalog_no :	AT6121
Applications :	WB,ELISA
Reactivity :	Human,Mouse,Rat
Category :	抗原抗体
Size :	100µg/50µg/20µg
Gene_name :	MAPK14 CSBP CSBP1 CSBP2 CSPB1 MXI2 SAPK2A
Protein_name :	Mitogen-activated protein kinase 14 (MAP kinase 14) (MAPK 14) (EC 2.7.11.24) (Cytokine suppressive anti-inflammatory drug-binding protein) (CSAID-binding protein) (CSBP) (MAP kinase MXI2) (MAX-interacting protein 2) (Mitogen-activated protein kinase
Humangene_id :	<a href="#">1432</a>
Humanswissprot_no :	<a href="#">Q16539</a>
Immunogen :	Synthesized peptide derived from human p38 MAPK Polyclonal
Specificity :	This antibody detects endogenous levels of p38 MAPK.
Formulation :	Liquid in PBS containing 50% glycerol, 0.5% BSA and 0.02% sodium azide.
Source :	Rabbit
Dilution :	WB 1:500-2000, ELISA 1:10000-20000
Purification :	The antibody was affinity-purified from rabbit antiserum by affinity-chromatography using epitope-specific immunogen.
Concentration :	1 mg/ml
Storage_stability :	-20°C/1 year
Msds :	MSDS_Antibody.pdf
Other_name :	Mitogen-activated protein kinase 14 (MAP kinase 14) (MAPK 14) (EC 2.7.11.24) (Cytokine suppressive anti-inflammatory drug-binding protein) (CSAID-binding protein) (CSBP) (MAP kinase MXI2) (MAX-interacting protein 2) (Mitogen-activated protein kinase p38 alpha) (MAP kinase p38 alpha) (Stress-activated protein kinase 2a) (SAPK2a)
Molecular Weight :	42KD

## Product Images



- 1 mouse-brain
- 2 mouse-liver
- 3 CACO2

Western blot analysis of various lysate, antibody was diluted at 1000. Secondary antibody was diluted at 1:20000