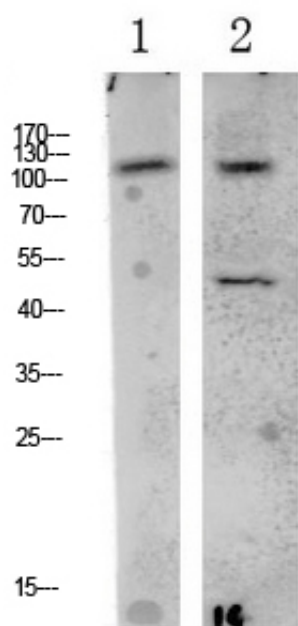


## LATS1/2 antibody

Catalog_no :	AT6125
Applications :	WB,ELISA
Reactivity :	Human,Mouse,Rat
Category :	抗原抗体
Size :	100µg/50µg/20µg
Gene_name :	LATS1 WARTS
Protein_name :	Serine/threonine-protein kinase LATS1 (EC 2.7.11.1) (Large tumor suppressor homolog 1) (WARTS protein kinase) (h-warts)
Humangene_id :	<a href="#">9113</a>
Humanswissprot_no :	<a href="#">O95835</a>
Immunogen :	Synthesized peptide derived from human LATS1/2
Specificity :	This antibody detects endogenous levels of LATS1/2 antibody
Formulation :	Liquid in PBS containing 50% glycerol, 0.5% BSA and 0.02% sodium azide.
Source :	Rabbit
Dilution :	WB 1:500-2000, ELISA 1:10000-20000
Purification :	The antibody was affinity-purified from rabbit antiserum by affinity-chromatography using epitope-specific immunogen.
Concentration :	1 mg/ml
Storage_stability :	-20°C/1 year
Msds :	<a href="#">MSDS_Antibody.pdf</a>
Other_name :	Serine/threonine-protein kinase LATS1 (EC 2.7.11.1) (Large tumor suppressor homolog 1) (WARTS protein kinase) (h-warts)
Molecular Weight :	120KD

## Product Images



Western blot analysis of various lysate, antibody was diluted at 1000. Secondary antibody was diluted at 1:20000

1 HEPG2 UV

2 CAC02