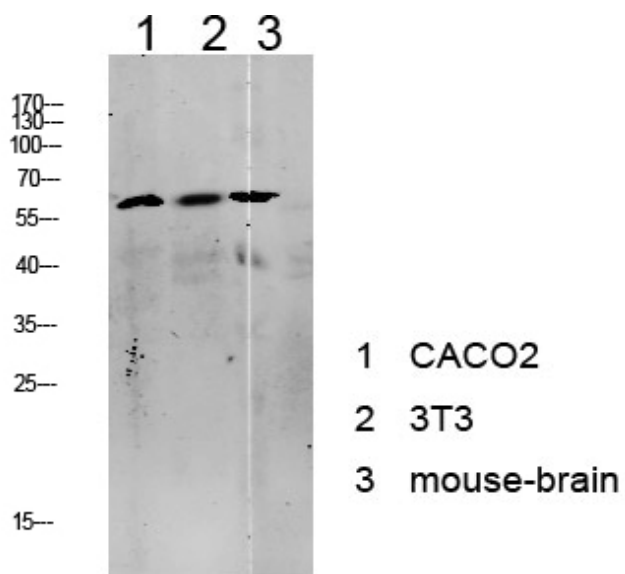


Tip60 Polyclonal Antibody

Catalog_no :	AT6133
Applications :	WB,ELISA
Reactivity :	Human,Mouse,Rat
Category :	抗原抗体
Size :	100µg/50µg/20µg
Gene_name :	KAT5 HTATIP TIP60
Protein_name :	Histone acetyltransferase KAT5 (EC 2.3.1.48) (60 kDa Tat-interactive protein) (Tip60) (Histone acetyltransferase HTATIP) (HIV-1 Tat interactive protein) (Lysine acetyltransferase 5) (cPLA(2)-interacting protein)
Humangene_id :	10524
Humanswissprot_no :	Q92993
Immunogen :	Synthesized peptide derived from human Tip60 Polyclonal
Specificity :	This antibody detects endogenous levels of Tip60.
Formulation :	Liquid in PBS containing 50% glycerol, 0.5% BSA and 0.02% sodium azide.
Source :	Rabbit
Dilution :	WB 1:500-2000, ELISA 1:10000-20000
Purification :	The antibody was affinity-purified from rabbit antiserum by affinity-chromatography using epitope-specific immunogen.
Concentration :	1 mg/ml
Storage_stability :	-20°C/1 year
Msds :	MSDS_Antibody.pdf
Other_name :	Histone acetyltransferase KAT5 (EC 2.3.1.48) (60 kDa Tat-interactive protein) (Tip60) (Histone acetyltransferase HTATIP) (HIV-1 Tat interactive protein) (Lysine acetyltransferase 5) (cPLA(2)-interacting protein)
Molecular Weight :	60KD

Product Images



Western blot analysis of various lysate, antibody was diluted at 1000. Secondary antibody was diluted at 1:20000