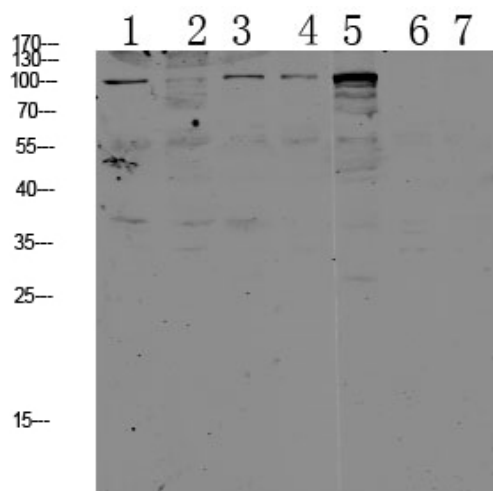


CDH17 Polyclonal Antibody

| | |
|---------------------|---|
| Catalog_no : | AT6143 |
| Applications : | WB,ELISA |
| Reactivity : | Human,Mouse,Rat |
| Category : | 抗原抗体 |
| Size : | 100µg/50µg/20µg |
| Gene_name : | CDH17 |
| Protein_name : | Cadherin-17 (Intestinal peptide-associated transporter HPT-1) (Liver-intestine cadherin) (LI-cadherin) |
| Humangene_id : | 1015 |
| Humanswissprot_no : | Q12864 |
| Immunogen : | Synthesized peptide derived from human CDH17 Polyclonal |
| Specificity : | This antibody detects endogenous levels of CDH17. |
| Formulation : | Liquid in PBS containing 50% glycerol, 0.5% BSA and 0.02% sodium azide. |
| Source : | Rabbit |
| Dilution : | WB 1:500-2000, ELISA 1:10000-20000 |
| Purification : | The antibody was affinity-purified from rabbit antiserum by affinity-chromatography using epitope-specific immunogen. |
| Concentration : | 1 mg/ml |
| Storage_stability : | -20°C/1 year |
| Msds : | MSDS_Antibody.pdf |
| Other_name : | Cadherin-17 (Intestinal peptide-associated transporter HPT-1) (Liver-intestine cadherin) (LI-cadherin) |
| Molecular Weight : | 99KD |

Product Images



- 1 K562
- 2 A549
- 3 MCF-7
- 4 HEK293
- 5 HCT116
- 6 PC-12
- 7 A431

Western blot analysis of various lysate, antibody was diluted at 1000. Secondary antibody was diluted at 1:20000