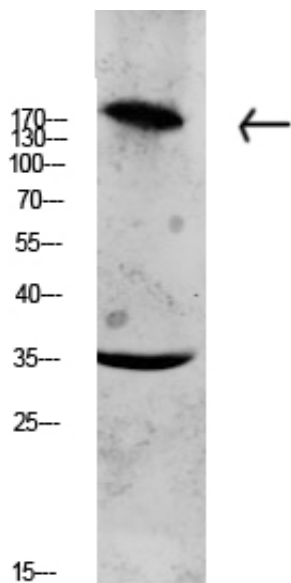




## Collagen XI $\alpha$ 1 Polyclonal Antibody

Catalog_no :	AT6145
Applications :	WB,ELISA
Reactivity :	Human,Mouse,Rat
Category :	抗原抗体
Size :	100 $\mu$ g/50 $\mu$ g/20 $\mu$ g
Gene_name :	COL11A1 COLL6
Protein_name :	Collagen alpha-1(XI) chain
Humangene_id	<a href="#">1301</a>
:	
Humanswissprot	<a href="#">P12107</a>
_no :	
Immunogen :	Synthesized peptide derived from human Collagen XI $\alpha$ 1 Polyclonal
Specificity :	This antibody detects endogenous levels of Collagen XI $\alpha$ 1.
Formulation :	Liquid in PBS containing 50% glycerol, 0.5% BSA and 0.02% sodium azide.
Source :	Rabbit
Dilution :	WB 1:500-2000, ELISA 1:10000-20000
Purification :	The antibody was affinity-purified from rabbit antiserum by affinity-chromatography using epitope-specific immunogen.
Concentration :	1 mg/ml
Storage_stability	-20°C/1 year
:	
Msds :	MSDS_Antibody.pdf
Other_name :	Collagen alpha-1(XI) chain
Molecular Weight :	180KD

## Product Images



Western blot analysis of CACO2 lysate, antibody was diluted at 1000. Secondary antibody was diluted at 1:20000