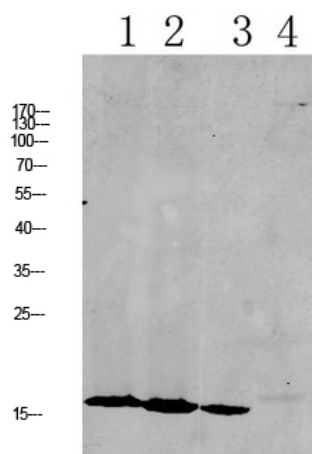




## RPL35 Polyclonal Antibody

Catalog_no :	<u>AT6147</u>
Applications :	<u>WB,ELISA</u>
Reactivity :	<u>Human,Mouse,Rat</u>
Category :	<u>抗原抗体</u>
Size :	<u>100µg/50µg/20µg</u>
Gene_name :	<u>RPL35</u>
Protein_name :	<u>60S ribosomal protein L35</u>
Humangene_id	<u><a href="#">11224</a></u>
:	<u></u>
Humanswissprot	<u><a href="#">P42766</a></u>
_no :	<u></u>
Immunogen :	<u>Synthesized peptide derived from human RPL35 Polyclonal</u>
Specificity :	<u>This antibody detects endogenous levels of RPL35.</u>
Formulation :	<u>Liquid in PBS containing 50% glycerol, 0.5% BSA and 0.02% sodium azide.</u>
Source :	<u>Rabbit</u>
Dilution :	<u>WB 1:500-2000, ELISA 1:10000-20000</u>
Purification :	<u>The antibody was affinity-purified from rabbit antiserum by affinity-chromatography using epitope-specific immunogen.</u>
Concentration :	<u>1 mg/ml</u>
Storage_stability	<u>-20°C/1 year</u>
:	<u></u>
Msds :	<u>MSDS_Antibody.pdf</u>
Other_name :	<u>60S ribosomal protein L35</u>
Molecular	<u>16KD</u>
Weight :	<u></u>

## Product Images



- 1 mouse-lung
- 2 mouse-kidney
- 3 mouse-liver
- 4 CAC02

Western blot analysis of various lysate, antibody was diluted at 1000. Secondary antibody was diluted at 1:20000