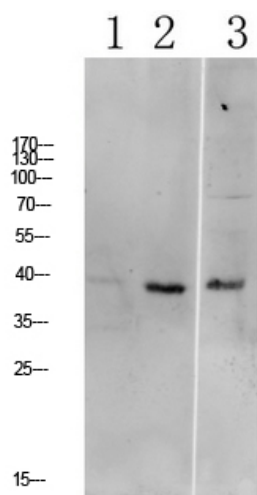


ATG4A Polyclonal Antibody

Catalog_no :	AT6148
Applications :	WB,ELISA
Reactivity :	Human,Mouse,Rat
Category :	抗原抗体
Size :	100µg/50µg/20µg
Gene_name :	ATG4A APG4A AUTL2
Protein_name :	Cysteine protease ATG4A (EC 3.4.22.-) (AUT-like 2 cysteine endopeptidase) (Autophagin-2) (Autophagy-related cysteine endopeptidase 2) (Autophagy-related protein 4 homolog A) (hAPG4A)
Humangene_id :	115201
Humanswissprot_no :	Q8WYN0
Immunogen :	Synthesized peptide derived from human ATG4A Polyclonal
Specificity :	This antibody detects endogenous levels of ATG4A.
Formulation :	Liquid in PBS containing 50% glycerol, 0.5% BSA and 0.02% sodium azide.
Source :	Rabbit
Dilution :	WB 1:500-2000, ELISA 1:10000-20000
Purification :	The antibody was affinity-purified from rabbit antiserum by affinity-chromatography using epitope-specific immunogen.
Concentration :	1 mg/ml
Storage_stability :	-20°C/1 year
Msds :	MSDS_Antibody.pdf
Other_name :	Cysteine protease ATG4A (EC 3.4.22.-) (AUT-like 2 cysteine endopeptidase) (Autophagin-2) (Autophagy-related cysteine endopeptidase 2) (Autophagy-related protein 4 homolog A) (hAPG4A)
Molecular Weight :	40KD

Product Images



1 mouse-lung

2 mouse-kidney

3 mouse-liver

Western blot analysis of mouse-liver lysate, antibody was diluted at 1000. Secondary antibody was diluted at 1:20000