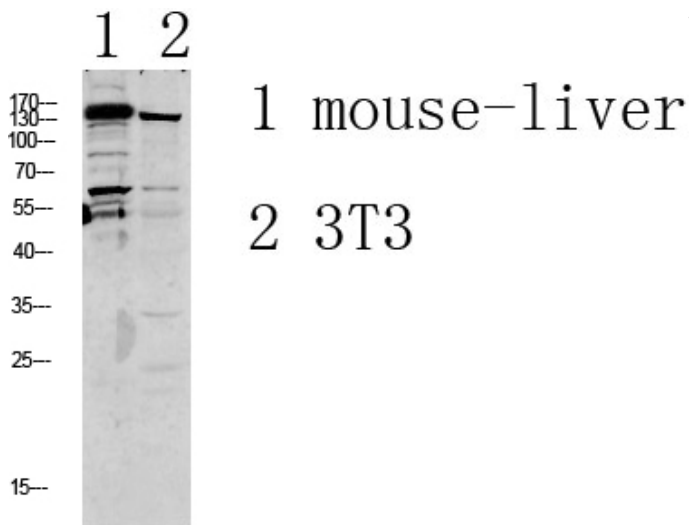


## GRIN2D Polyclonal Antibody

|                     |   |
|---------------------|---|
| Catalog_no :        | AT6149  |
| Applications :      | WB,ELISA  |
| Reactivity :        | Human,Mouse,Rat   |
| Category :          | 抗原抗体  |
| Size :              | 100µg/50µg/20µg   |
| Gene_name :         | GRIN2D GluN2D NMDAR2D   |
| Protein_name :      | Glutamate [NMDA] receptor subunit epsilon-4 (EB11) (N-methyl D-aspartate receptor subtype 2D) (NMDAR2D) (NR2D)        |
| Humangene_id :      | <a href="#">2906</a>  |
| Humanswissprot_no : | <a href="#">O15399</a>  |
| Immunogen :         | Synthesized peptide derived from human GRIN2D Polyclonal  |
| Specificity :       | This antibody detects endogenous levels of GRIN2D.  |
| Formulation :       | Liquid in PBS containing 50% glycerol, 0.5% BSA and 0.02% sodium azide.   |
| Source :            | Rabbit  |
| Dilution :          | WB 1:500-2000, ELISA 1:10000-20000  |
| Purification :      | The antibody was affinity-purified from rabbit antiserum by affinity-chromatography using epitope-specific immunogen. |
| Concentration :     | 1 mg/ml   |
| Storage_stability : | -20°C/1 year  |
| Msds :              | MSDS_Antibody.pdf   |
| Other_name :        | Glutamate [NMDA] receptor subunit epsilon-4 (EB11) (N-methyl D-aspartate receptor subtype 2D) (NMDAR2D) (NR2D)        |
| Molecular Weight :  | 145KD   |

## Product Images



Western blot analysis of various lysate, antibody was diluted at 1000. Secondary antibody was diluted at 1:20000