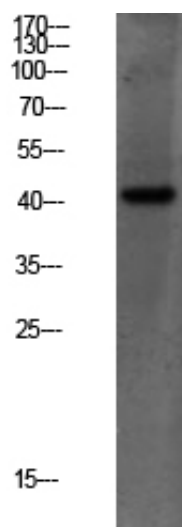




## PEX14 Polyclonal Antibody

Catalog_no :	AT6152
Applications :	WB,ELISA
Reactivity :	Human,Mouse,Rat
Category :	抗原抗体
Size :	100µg/50µg/20µg
Gene_name :	PEX14
Protein_name :	Peroxisomal membrane protein PEX14 (PTS1 receptor-docking protein) (Peroxin-14) (Peroxisomal membrane anchor protein PEX14)
Humangene_id :	<a href="#">5195</a>
Humanswissprot_no :	<a href="#">O75381</a>
Immunogen :	Synthesized peptide derived from human PEX14 Polyclonal
Specificity :	This antibody detects endogenous levels of PEX14.
Formulation :	Liquid in PBS containing 50% glycerol, 0.5% BSA and 0.02% sodium azide.
Source :	Rabbit
Dilution :	WB 1:500-2000, ELISA 1:10000-20000
Purification :	The antibody was affinity-purified from rabbit antiserum by affinity-chromatography using epitope-specific immunogen.
Concentration :	1 mg/ml
Storage_stability :	-20°C/1 year
Msds :	MSDS_Antibody.pdf
Other_name :	Peroxisomal membrane protein PEX14 (PTS1 receptor-docking protein) (Peroxin-14) (Peroxisomal membrane anchor protein PEX14)
Molecular Weight :	41KD

## Product Images



Western blot analysis of mouse-liver lysate, antibody was diluted at 1000. Secondary antibody was diluted at 1:20000