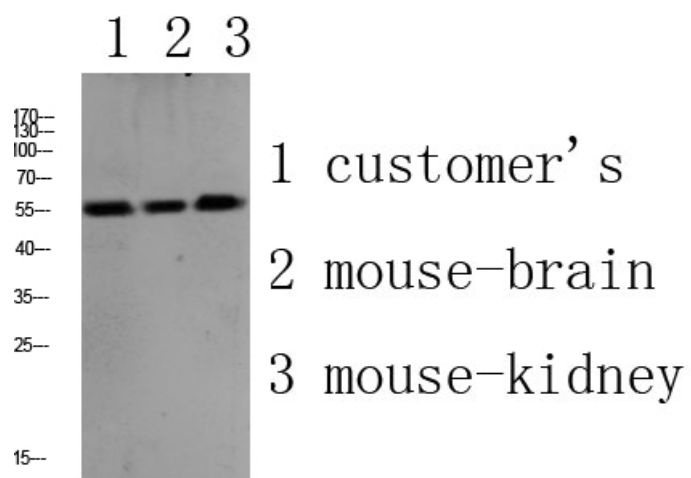


PLD4 Polyclonal Antibody

Catalog_no :	AT6153
Applications :	WB,ELISA
Reactivity :	Human,Mouse,Rat
Category :	抗原抗体
Size :	100µg/50µg/20µg
Gene_name :	PLD4 C14orf175 UNQ2488/PRO5775
Protein_name :	Phospholipase D4 (PLD 4) (EC 3.1.4.4) (Choline phosphatase 4) (Phosphatidylcholine-hydrolyzing phospholipase D4)
Humangene_id :	122618
Humanswissprot_no :	Q96BZ4
Immunogen :	Synthesized peptide derived from human PLD4 Polyclonal
Specificity :	This antibody detects endogenous levels of PLD4.
Formulation :	Liquid in PBS containing 50% glycerol, 0.5% BSA and 0.02% sodium azide.
Source :	Rabbit
Dilution :	WB 1:500-2000, ELISA 1:10000-20000
Purification :	The antibody was affinity-purified from rabbit antiserum by affinity-chromatography using epitope-specific immunogen.
Concentration :	1 mg/ml
Storage_stability :	-20°C/1 year
Msds :	MSDS_Antibody.pdf
Other_name :	Phospholipase D4 (PLD 4) (EC 3.1.4.4) (Choline phosphatase 4) (Phosphatidylcholine-hydrolyzing phospholipase D4)
Molecular Weight :	55KD

Product Images



Western blot analysis of various lysate, antibody was diluted at 1000. Secondary antibody was diluted at 1:20000