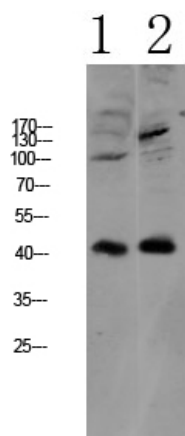




AGTR1 Polyclonal Antibody

Catalog_no :	AT6157
Applications :	WB,ELISA
Reactivity :	Human,Mouse,Rat
Category :	抗原抗体
Size :	100µg/50µg/20µg
Gene_name :	AGTR1 AGTR1A AGTR1B AT2R1 AT2R1B
Protein_name :	Type-1 angiotensin II receptor (AT1AR) (AT1BR) (Angiotensin II type-1 receptor) (AT1)
Humangene_id	185
:	
Humanswissprot	P30556
_no :	
Immunogen :	Synthesized peptide derived from human AGTR1 Polyclonal
Specificity :	This antibody detects endogenous levels of AGTR1.
Formulation :	Liquid in PBS containing 50% glycerol, 0.5% BSA and 0.02% sodium azide.
Source :	Rabbit
Dilution :	WB 1:500-2000, ELISA 1:10000-20000
Purification :	The antibody was affinity-purified from rabbit antiserum by affinity-chromatography using epitope-specific immunogen.
Concentration :	1 mg/ml
Storage_stability	-20°C/1 year
:	
Msds :	MSDS_Antibody.pdf
Other_name :	Type-1 angiotensin II receptor (AT1AR) (AT1BR) (Angiotensin II type-1 receptor) (AT1)
Molecular Weight :	41KD

Product Images



1 mouse-liver

2 mouse-kidney

Western blot analysis of various lysate, antibody was diluted at 1000. Secondary antibody was diluted at 1:20000