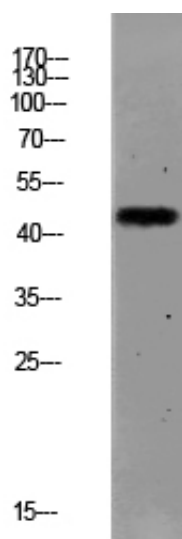




## PAR1 (Cleaved-Ser42) Polyclonal Antibody

Catalog_no :	AT6162
Applications :	WB,ELISA
Reactivity :	Human,Mouse,Rat
Category :	抗原抗体
Size :	100µg/50µg/20µg
Gene_name :	F2R CF2R PAR1 TR
Protein_name :	Proteinase-activated receptor 1 (PAR-1) (Coagulation factor II receptor) (Thrombin receptor)
Humangene_id :	<a href="#">2149</a>
Humanswissprot_no :	<a href="#">P25116</a>
Immunogen :	Synthesized peptide derived from human PAR1 (Cleaved-Ser42) Polyclonal
Specificity :	This antibody detects endogenous levels of PAR1 (Cleaved-Ser42).
Formulation :	Liquid in PBS containing 50% glycerol, 0.5% BSA and 0.02% sodium azide.
Source :	Rabbit
Dilution :	WB 1:500-2000, ELISA 1:10000-20000
Purification :	The antibody was affinity-purified from rabbit antiserum by affinity-chromatography using epitope-specific immunogen.
Concentration :	1 mg/ml
Storage_stability :	-20°C/1 year
Msds :	<a href="#">MSDS_Antibody.pdf</a>
Other_name :	Proteinase-activated receptor 1 (PAR-1) (Coagulation factor II receptor) (Thrombin receptor)
Molecular Weight :	46KD

## Product Images



Western blot analysis of MCF-7 lysate, antibody was diluted at 1000. Secondary antibody was diluted at 1:20000