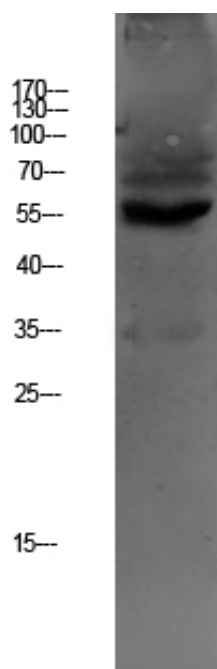




OAT1 Polyclonal Antibody

Catalog_no :	<u>AT6167</u>
Applications :	<u>WB,ELISA</u>
Reactivity :	<u>Human,Mouse,Rat</u>
Category :	<u>抗原抗体</u>
Size :	<u>100µg/50µg/20µg</u>
Humanswissprot _no :	<u>O95742</u>
Immunogen :	<u>Synthesized peptide derived from human OAT1 Polyclonal</u>
Specificity :	<u>This antibody detects endogenous levels of OAT1.</u>
Formulation :	<u>Liquid in PBS containing 50% glycerol, 0.5% BSA and 0.02% sodium azide.</u>
Source :	<u>Rabbit</u>
Dilution :	<u>WB 1:500-2000, ELISA 1:10000-20000</u>
Purification :	<u>The antibody was affinity-purified from rabbit antiserum by affinity-chromatography using epitope-specific immunogen.</u>
Concentration :	<u>1 mg/ml</u>
Storage_stability :	<u>-20°C/1 year</u>
Msds :	<u>MSDS_Antibody.pdf</u>
Molecular Weight :	<u>55KD</u>

Product Images



Western blot analysis of HEPG2 lysate, antibody was diluted at 1000. Secondary antibody was diluted at 1:20000