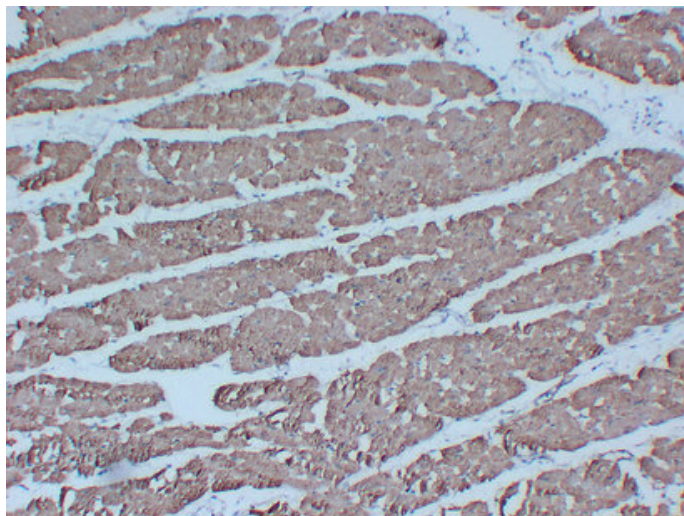




Actin pan (6A1) mouse mAb

Catalog_no :	AM6602
Applications :	IHC-p,WB
Reactivity :	Human
Category :	抗原抗体
Size :	50μl/100μl
Gene_name :	Actin pan
Protein_name :	Actin pan
Humanswissprot_no :	P60709/Q9BYX7/P63261
Immunogen :	Synthesized peptide derived from human Actin pan
Specificity :	This antibody detects endogenous levels of human Actin pan
Formulation :	Liquid in PBS containing 50% glycerol, 0.5% BSA and 0.02% sodium azide.
Source :	Mouse/IgG2b, Kappa
Dilution :	IHC-p 1:100-500 , WB 1:500-2000
Purification :	The antibody was affinity-purified from mouse ascites by affinity-chromatography using specific immunogen.
Concentration :	1 mg/ml
Storage_stability :	-20°C/1 year
Notes :	cell morphogenesis, cell morphogenesis involved in differentiation, cell motion, axonogenesis, response to inorganic substance, response to metal ion, cell projection organization, neuron differentiation, neuron projection development,cellular compon

Product Images



Immunohistochemical analysis of paraffin-embedded Cardiac muscle. 1, Antibody was diluted at 1:200(4°,overnight). 2, Citrate buffer of pH6.0 was used for antigen retrieval. 3,Secondary antibody was diluted at 1:200(room temperature, 30min).