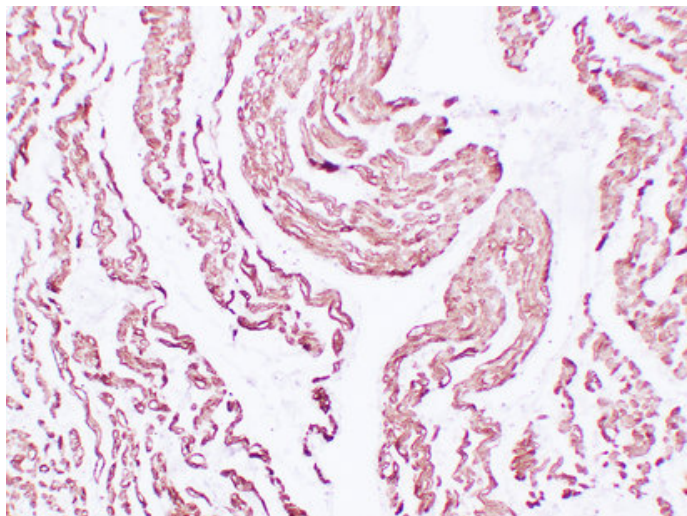


Actin, Muscle Specific (9P2) mouse mAb

Catalog_no :	AM6603
Applications :	IHC-p
Reactivity :	Human
Category :	抗原抗体
Size :	50µl/100µl
Gene_name :	Actin, Muscle Specific
Protein_name :	Actin, Muscle Specific
Humanswissprot _no :	P68032/P68133/P63267
Immunogen :	Synthesized peptide derived from human Actin, Muscle Specific
Specificity :	This antibody detects endogenous levels of human Actin, Muscle Specific
Formulation :	Liquid in PBS containing 50% glycerol, 0.5% BSA and 0.02% sodium azide.
Source :	Mouse/IgG1, Kappa
Dilution :	IHC-p 1:100-500
Purification :	The antibody was affinity-purified from mouse ascites by affinity-chromatography using specific immunogen.
Concentration :	1 mg/ml
Storage_stability :	-20°C/1 year
Notes :	heart morphogenesis, muscle system process, circulatory system process, heart process, vascular process in circulatory system, apoptosis, muscle contraction, smooth muscle contraction, striated muscle contraction,cytoskeleton organization, actin fila

Product Images



Immunohistochemical analysis of paraffin-embedded Cardiac muscle . 1, Antibody was diluted at 1:200(4°,overnight). 2, Citrate buffer of pH6.0 was used for antigen retrieval. 3,Secondary antibody was diluted at 1:200(room temperature, 30min).