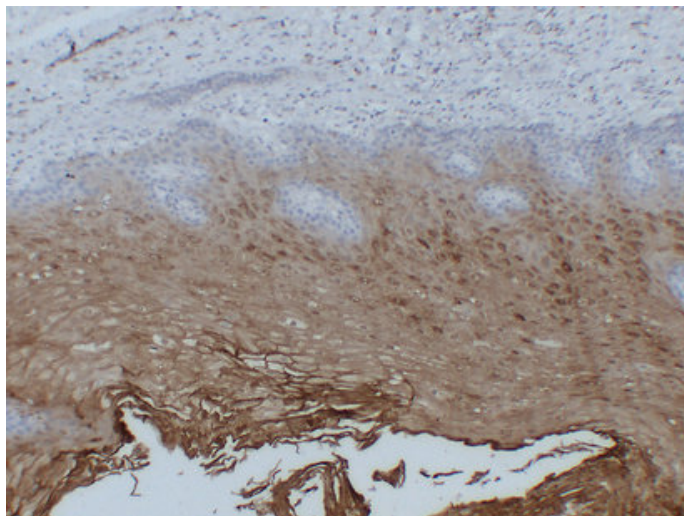




Annexin A1 (2V5) mouse mAb

Catalog_no :	AM6608
Applications :	IHC-p
Reactivity :	Human
Category :	抗原抗体
Size :	50µl/100µl
Gene_name :	ANXA1 ANX1 LPC1
Protein_name :	Annexin A1 (Annexin I) (Annexin-1) (Calpactin II) (Calpactin-2) (Chromobindin-9) (Lipocortin I) (Phospholipase A2 inhibitory protein) (p35)
Humanswissprot_no :	P04083
Immunogen :	Synthesized peptide derived from human Annexin A1
Specificity :	This antibody detects endogenous levels of human Annexin A1
Formulation :	Liquid in PBS containing 50% glycerol, 0.5% BSA and 0.02% sodium azide.
Source :	Mouse/IgG1, Kappa
Dilution :	IHC-p 1:100-500
Purification :	The antibody was affinity-purified from mouse ascites by affinity-chromatography using specific immunogen.
Concentration :	1 mg/ml
Storage_stability :	-20°C/1 year
Notes :	lipid transport, anti-apoptosis, cell motion, defense response, inflammatory response, cell cycle, cell surface receptor linked signal transduction, ectoderm development, epidermis development, response to wounding, epidermal cell differentiation, li

Product Images



Immunohistochemical analysis of paraffin-embedded Esophagus. 1, Antibody was diluted at 1:200(4°,overnight). 2, TRIS-EDTA of pH8.0 was used for antigen retrieval. 3,Secondary antibody was diluted at 1:200(room temperature, 30min).