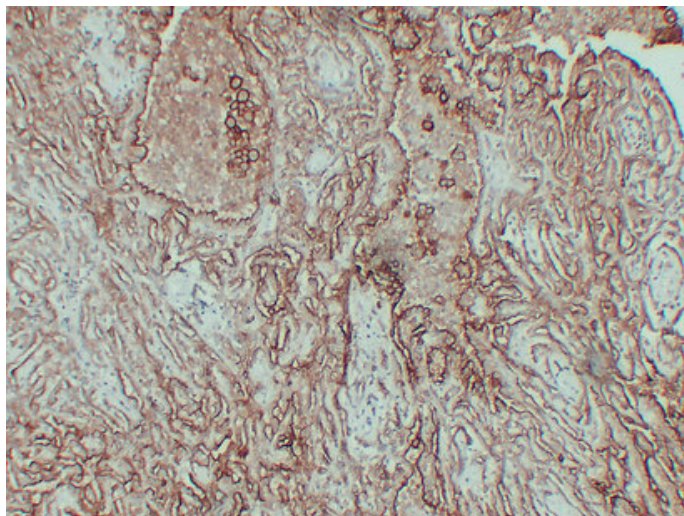




## CA 125 (3X8) mouse mAb

Catalog_no :	AM6242
Applications :	IHC-p
Reactivity :	Human
Category :	抗原抗体
Size :	50µl/100µl
Gene_name :	MUC16 CA125
Protein_name :	Mucin-16 (MUC-16) (Ovarian cancer-related tumor marker CA125) (CA-125) (Ovarian carcinoma antigen CA125)
Humanswissprot_no :	<a href="#">Q8WXI7</a>
Immunogen :	Synthesized peptide derived from human CA 125
Specificity :	This antibody detects endogenous levels of human CA 125
Formulation :	Liquid in PBS containing 50% glycerol, 0.5% BSA and 0.02% sodium azide.
Source :	Mouse/IgG1, Kappa
Dilution :	IHC-p 1:100-500
Purification :	The antibody was affinity-purified from mouse ascites by affinity-chromatography using specific immunogen.
Concentration :	1 mg/ml
Storage_stability :	-20°C/1 year
Notes :	cell adhesion, biological adhesion,

## Product Images



Immunohistochemical analysis of paraffin-embedded Mesothelioma. 1, Antibody was diluted at 1:200(4°,overnight). 2, Tris-EDTA,pH8.0 was used for antigen retrieval. 3,Secondary antibody was diluted at 1:200(room temperature, 30min).