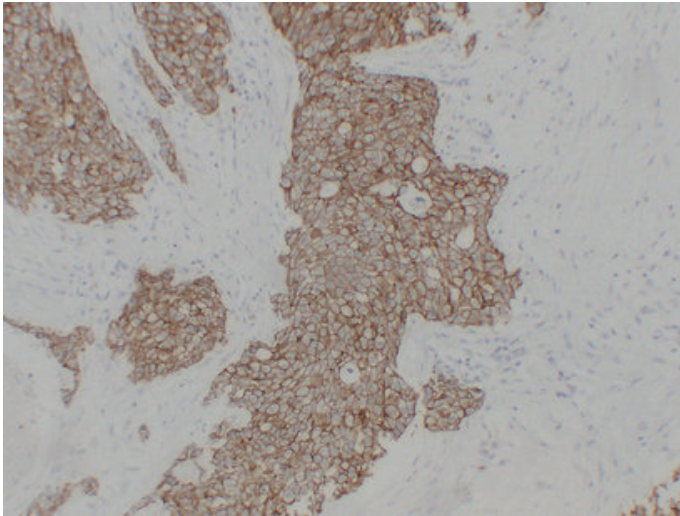




## cadherin pan (6R7) mouse mAb

Catalog_no :	AM6610
Applications :	IHC-p,WB,IF
Reactivity :	Human
Category :	抗原抗体
Size :	50µl/100µl
Gene_name :	cadherin pan
Protein_name :	cadherin pan
Humanswissprot_no :	<a href="#">P12830/P19022/P22223/P55283/O75309</a>
Immunogen :	Synthesized peptide derived from human cadherin pan
Specificity :	This antibody detects endogenous levels of human cadherin pan
Formulation :	Liquid in PBS containing 50% glycerol, 0.5% BSA and 0.02% sodium azide.
Source :	Mouse/IgG1, Kappa
Dilution :	IHC-p 1:100-500 , WB 1:500-2000 , IF 1:500-200
Purification :	The antibody was affinity-purified from mouse ascites by affinity-chromatography using specific immunogen.
Concentration :	1 mg/ml
Storage_stability :	-20°C/1 year
Notes :	in utero embryonic development, blastocyst development, blastocyst formation, trophoctodermal cell differentiation,protein complex assembly, cell adhesion, homophilic cell adhesion, synaptogenesis, response to toxin, embryonic development ending in b

## Product Images



Immunohistochemical analysis of paraffin-embedded Breast carcinoma. 1, Antibody was diluted at 1:200(4°,overnight). 2, Citrate buffer of pH6.0 was used for antigen retrieval. 3,Secondary antibody was diluted at 1:200(room temperature, 30min).