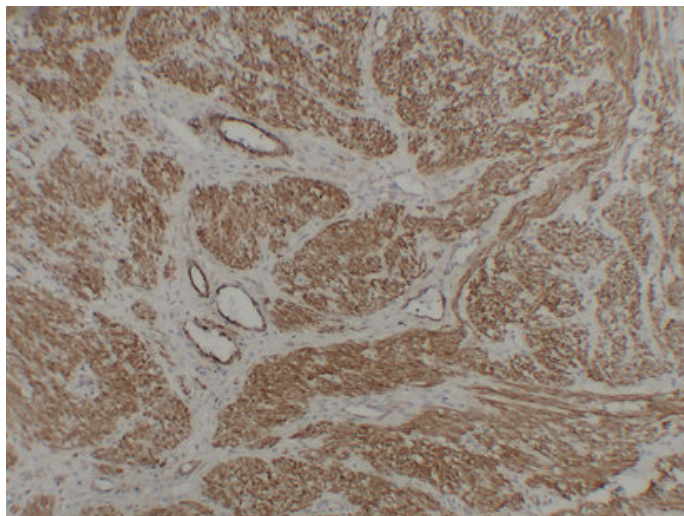




Caldesmon (3A10) mouse mAb

Catalog_no :	AM6006
Applications :	IHC-p, WB
Reactivity :	Human
Category :	抗原抗体
Size :	50μl/100μl
Gene_name :	CALD1 CAD CDM
Protein_name :	Caldesmon (CDM)
Humanswissprot_no :	Q05682
Immunogen :	Synthesized peptide derived from human Caldesmon
Specificity :	This antibody detects endogenous levels of human Caldesmon
Formulation :	Liquid in PBS containing 50% glycerol, 0.5% BSA and 0.02% sodium azide.
Source :	Mouse/IgG2b, Kappa
Dilution :	IHC-p 1:100-500 , WB 1:500-2000
Purification :	The antibody was affinity-purified from mouse ascites by affinity-chromatography using specific immunogen.
Concentration :	1 mg/ml
Storage_stability :	-20°C/1 year
Notes :	muscle system process, cell motion, muscle contraction, cytoskeleton organization, actin filament organization, actin filament-based process, actin cytoskeleton organization, positive regulation of protein binding, regulation of protein binding, posi

Product Images



Immunohistochemical analysis of paraffin-embedded Fibroid. 1, Antibody was diluted at 1:200(4°,overnight).
2, Tris-EDTA,pH8.0 was used for antigen retrieval.
3,Secondary antibody was diluted at 1:200(room temperature, 30min).