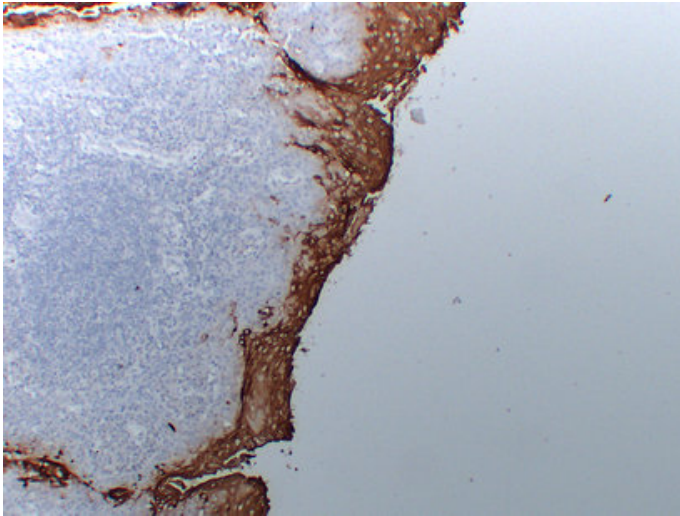


## carcinoembryonic antigen(CEA) (7U3) mouse mAb

|                     |  |
|---------------------|--|
| Catalog_no :        | AM6026   |
| Applications :      | IHC-p  |
| Reactivity :        | Human  |
| Category :          | 抗原抗体   |
| Size :              | 50µl/100µl   |
| Gene_name :         | CEACAM5 CEA  |
| Protein_name :      | Carcinoembryonic antigen-related cell adhesion molecule 5 (Carcinoembryonic antigen) (CEA) (Meconium antigen 100) (CD antigen CD66e) |
| Humanswissprot_no : | <a href="#">P06731</a>   |
| Immunogen :         | Synthesized peptide derived from human carcinoembryonic antigen(CEA)   |
| Specificity :       | This antibody detects endogenous levels of human carcinoembryonic antigen(CEA)   |
| Formulation :       | Liquid in PBS containing 50% glycerol, 0.5% BSA and 0.02% sodium azide.  |
| Source :            | Mouse IgG  |
| Dilution :          | IHC-p 1:100-500  |
| Purification :      | The antibody was affinity-purified from mouse ascites by affinity-chromatography using specific immunogen.                           |
| Concentration :     | 1 mg/ml  |
| Storage_stability : | -20°C/1 year   |

## Product Images



Immunohistochemical analysis of paraffin-embedded Tonsil. 1, Antibody was diluted at 1:200(4°,overnight). 2, Tris-EDTA,pH8.0 was used for antigen retrieval. 3,Secondary antibody was diluted at 1:200(room temperature, 30min).