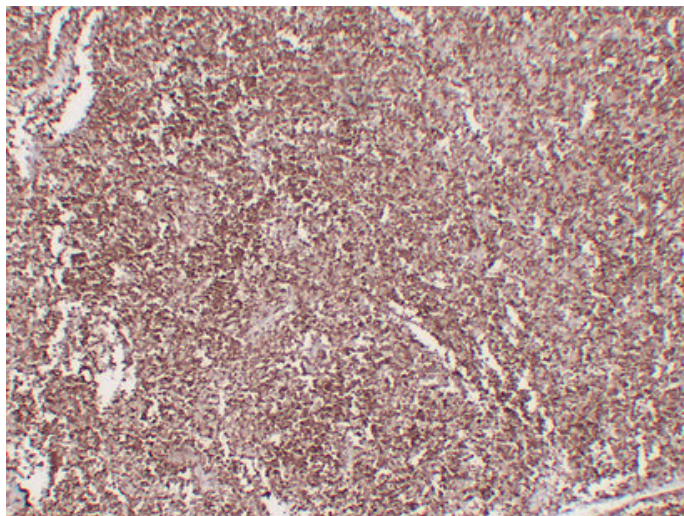


CD1a (4C10) mouse mAb

Catalog_no :	AM6147
Applications :	IHC-p
Reactivity :	Human
Category :	抗原抗体
Size :	50µl/100µl
Gene_name :	CD1A
Protein_name :	T-cell surface glycoprotein CD1a (T-cell surface antigen T6/Leu-6) (hTa1 thymocyte antigen) (CD antigen CD1a)
Humanswissprot_no :	P06126
Immunogen :	Synthesized peptide derived from human CD1a
Specificity :	This antibody detects endogenous levels of human CD1a
Formulation :	Liquid in PBS containing 50% glycerol, 0.5% BSA and 0.02% sodium azide.
Source :	Mouse/IgG2b, Kappa
Dilution :	IHC-p 1:100-500
Purification :	The antibody was affinity-purified from mouse ascites by affinity-chromatography using specific immunogen.
Concentration :	1 mg/ml
Storage_stability :	-20°C/1 year
Notes :	immune response, antigen processing and presentation,

Product Images



Immunohistochemical analysis of paraffin-embedded Thymoma. 1, Antibody was diluted at 1:200(4°,overnight). 2, Citrate buffer of pH6.0 was used for antigen retrieval. 3,Secondary antibody was diluted at 1:200(room temperature, 30min).