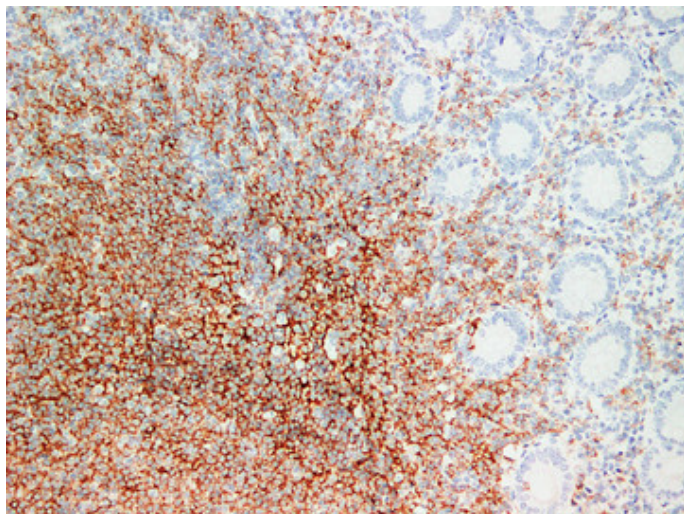




## CD20 (2Q2) mouse mAb

Catalog_no :	AM6571
Applications :	IHC-p
Reactivity :	Human
Category :	抗原抗体
Size :	50µl/100µl
Gene_name :	MS4A1 CD20
Protein_name :	B-lymphocyte antigen CD20 (B-lymphocyte surface antigen B1) (Bp35) (Leukocyte surface antigen Leu-16) (Membrane-spanning 4-domains subfamily A member 1) (CD antigen CD20)
Humanswissprot_no :	<a href="#">P11836</a>
Immunogen :	Synthesized peptide derived from human CD20
Specificity :	This antibody detects endogenous levels of human CD20
Formulation :	Liquid in PBS containing 50% glycerol, 0.5% BSA and 0.02% sodium azide.
Source :	Mouse/IgG2b, Kappa
Dilution :	IHC-p 1:100-500
Purification :	The antibody was affinity-purified from mouse ascites by affinity-chromatography using specific immunogen.
Concentration :	1 mg/ml
Storage_stability :	-20°C/1 year
Notes :	cell activation, immune response, B cell activation, leukocyte activation, lymphocyte activation,

## Product Images



Immunohistochemical analysis of paraffin-embedded Appendix. 1, Antibody was diluted at 1:200(4°,overnight). 2, Citrate buffer of pH6.0 was used for antigen retrieval. 3,Secondary antibody was diluted at 1:200(room temperature, 30min).