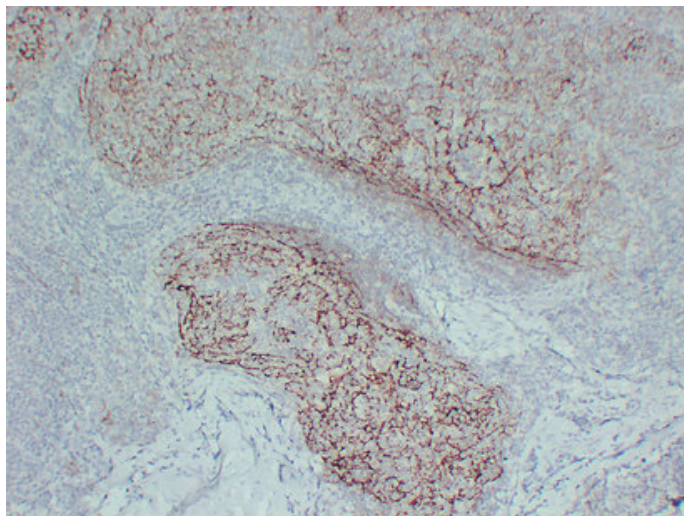


CD21 (9D1) mouse mAb

Catalog_no :	AM6013
Applications :	IHC-p
Reactivity :	Human
Category :	抗原抗体
Size :	50µl/100µl
Gene_name :	CR2 C3DR
Protein_name :	Complement receptor type 2 (Cr2) (Complement C3d receptor) (Epstein-Barr virus receptor) (EBV receptor) (CD antigen CD21)
Humanswissprot_no :	P20023
Immunogen :	Synthesized peptide derived from human CD21
Specificity :	This antibody detects endogenous levels of human CD21
Formulation :	Liquid in PBS containing 50% glycerol, 0.5% BSA and 0.02% sodium azide.
Source :	Mouse/IgG1, Kappa
Dilution :	IHC-p 1:100-500
Purification :	The antibody was affinity-purified from mouse ascites by affinity-chromatography using specific immunogen.
Concentration :	1 mg/ml
Storage_stability :	-20°C/1 year
Notes :	adaptive immune response, immune effector process, activation of immune response, leukocyte mediated immunity, lymphocyte mediated immunity, humoral immune response mediated by circulating immunoglobulin, adaptive immune response based on somatic reco

Product Images



Immunohistochemical analysis of paraffin-embedded Follicular Lymphoma. 1, Antibody was diluted at 1:200(4°,overnight). 2, Citric acid ,pH6.0 was used for antigen retrieval. 3,Secondary antibody was diluted at 1:200(room temperature, 30min).