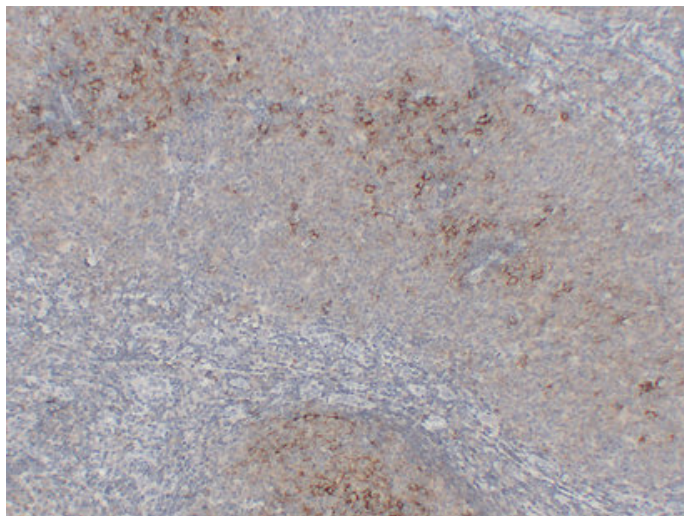


## CD23 (7F10) mouse mAb

Catalog_no :	AM6014
Applications :	IHC-p
Reactivity :	Human
Category :	抗原抗体
Size :	50µl/100µl
Gene_name :	FCER2 CD23A CLEC4J FCE2 IGEBF
Protein_name :	Low affinity immunoglobulin epsilon Fc receptor (BLAST-2) (C-type lectin domain family 4 member J) (Fc-epsilon-RII) (Immunoglobulin E-binding factor) (Lymphocyte IgE receptor) (CD antigen CD23) [Cleaved into: Low affinity immunoglobulin epsilon Fc re
Humanswissprot_no :	<a href="#">P06734</a>
Immunogen :	Synthesized peptide derived from human CD23
Specificity :	This antibody detects endogenous levels of human CD23
Formulation :	Liquid in PBS containing 50% glycerol, 0.5% BSA and 0.02% sodium azide.
Source :	Mouse/IgG1, Kappa
Dilution :	IHC-p 1:100-500
Purification :	The antibody was affinity-purified from mouse ascites by affinity-chromatography using specific immunogen.
Concentration :	1 mg/ml
Storage_stability :	-20°C/1 year
Notes :	positive regulation of immune system process, regulation of immune effector process, positive regulation of immune effector process, regulation of leukocyte mediated immunity, positive regulation of leukocyte mediated immunity,regulation of lymphocyt

## Product Images



Immunohistochemical analysis of paraffin-embedded Follicular lymphoma. 1, Antibody was diluted at 1:200(4°,overnight). 2, Citric acid ,pH6.0 was used for antigen retrieval. 3,Secondary antibody was diluted at 1:200(room temperature, 30min).