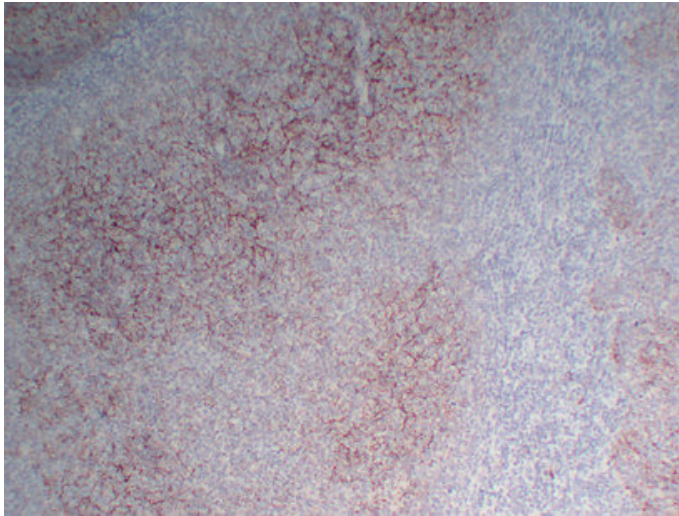




CD35 (9F1) mouse mAb

Catalog_no :	AM6280
Applications :	IHC-p
Reactivity :	Human
Category :	抗原抗体
Size :	50µl/100µl
Gene_name :	CR1 C3BR
Protein_name :	Complement receptor type 1 (C3b/C4b receptor) (CD antigen CD35)
Humanswissprot_no :	P17927
Immunogen :	Synthesized peptide derived from human CD35
Specificity :	This antibody detects endogenous levels of human CD35
Formulation :	Liquid in PBS containing 50% glycerol, 0.5% BSA and 0.02% sodium azide.
Source :	Mouse/IgG1, Kappa
Dilution :	IHC-p 1:100-500
Purification :	The antibody was affinity-purified from mouse ascites by affinity-chromatography using specific immunogen.
Concentration :	1 mg/ml
Storage_stability :	-20°C/1 year
Notes :	adaptive immune response, immune effector process, activation of immune response, leukocyte mediated immunity, lymphocyte mediated immunity, humoral immune response mediated by circulating immunoglobulin, adaptive immune response based on somatic reco

Product Images



Immunohistochemical analysis of paraffin-embedded Follicular Lymphoma. 1, Antibody was diluted at 1:200(4°,overnight). 2, Citric acid ,pH6.0 was used for antigen retrieval. 3,Secondary antibody was diluted at 1:200(room temperature, 30min).