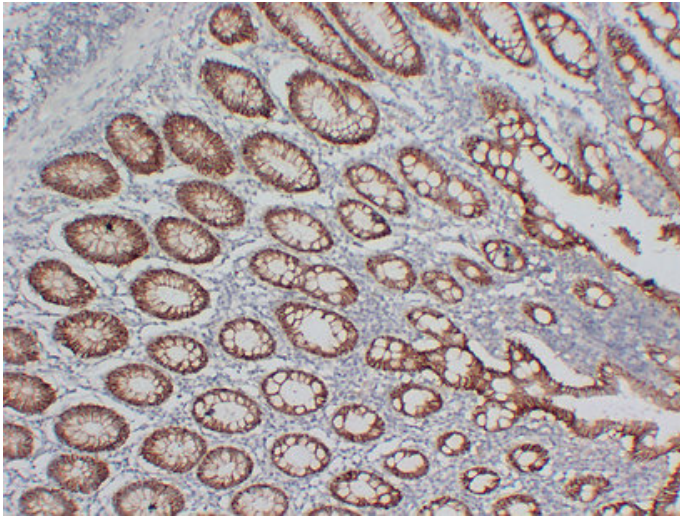


## Claudin 3 (6L5) mouse mAb

Catalog_no :	AM6618
Applications :	IHC-p
Reactivity :	Human
Category :	抗原抗体
Size :	50µl/100µl
Gene_name :	CLDN3 C7orf1 CPETR2
Protein_name :	Claudin-3 (Clostridium perfringens enterotoxin receptor 2) (CPE-R 2) (CPE-receptor 2) (Rat ventral prostate.1 protein homolog) (hRVP1)
Humanswissprot_no :	<a href="#">O15551</a>
Immunogen :	Synthesized peptide derived from human Claudin 3
Specificity :	This antibody detects endogenous levels of human Claudin 3
Formulation :	Liquid in PBS containing 50% glycerol, 0.5% BSA and 0.02% sodium azide.
Source :	Mouse/IgG1, Kappa
Dilution :	IHC-p 1:100-500
Purification :	The antibody was affinity-purified from mouse ascites by affinity-chromatography using specific immunogen.
Concentration :	1 mg/ml
Storage_stability :	-20°C/1 year
Notes :	response to hypoxia, cell adhesion, cell-cell adhesion, calcium-independent cell-cell adhesion, biological adhesion, response to oxygen levels,

## Product Images



Immunohistochemical analysis of paraffin-embedded Colon. 1, Antibody was diluted at 1:200(4°, overnight). 2, Citrate buffer of pH6.0 was used for antigen retrieval. 3, Secondary antibody was diluted at 1:200(room temperature, 30min).