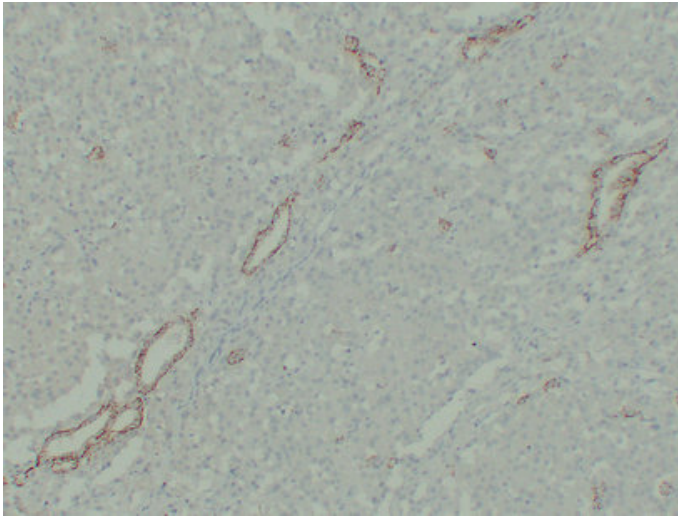




## Claudin 7 (9D5) mouse mAb

Catalog_no :	AM6371
Applications :	IHC-p,WB
Reactivity :	Human
Category :	抗原抗体
Size :	50µl/100µl
Gene_name :	CLDN7 CEPTL2 CPETRL2
Protein_name :	Claudin-7 (CLDN-7)
Humanswissprot_no :	<a href="#">O95471</a>
Immunogen :	Synthesized peptide derived from human Claudin 7
Specificity :	This antibody detects endogenous levels of human Claudin 7
Formulation :	Liquid in PBS containing 50% glycerol, 0.5% BSA and 0.02% sodium azide.
Source :	Mouse/IgG2a, Kappa
Dilution :	IHC-p 1:100-500 , WB 1:500-2000
Purification :	The antibody was affinity-purified from mouse ascites by affinity-chromatography using specific immunogen.
Concentration :	1 mg/ml
Storage_stability :	-20°C/1 year
Notes :	cell adhesion, cell-cell adhesion, calcium-independent cell-cell adhesion, biological adhesion,

## Product Images



Immunohistochemical analysis of paraffin-embedded Chromophobe cell renal carcinoma. 1, Antibody was diluted at 1:200(4°,overnight). 2, Citrate buffer of pH6.0 was used for antigen retrieval. 3,Secondary antibody was diluted at 1:200(room temperature, 30min).